

Egreat

A10

4K Blu-ray Media Player

User Guide



Welcome

Thank you for choosing Egreat brand product.

Egreat Technology Co., Ltd is a key National High-Tech enterprise, which was founded in 2006 Shenzhen China. We specialized in research, production, sales and service in UHD Media Player products and mainly marketed in South-East Asia, Europe and North America markets, all of our products with CE FCC RoHS certification and DTS & Dolby Licence.

Egreat always adheres to the business philosophy, faith, cautiousness, pragmatic and innovation, constantly optimizes the development strategy of high quality and perfect service. Now it has grown to be an integrative, comprehensive and high-tech manufacturer in such field.

With its strong R&D strength, advanced manufacturing line, professional sales team and high-efficiency after sales system, we have rapidly evolved into a leader in the UHD Media player industry and been recognized as a reliable supplier for many international buyers.

People all over the world are welcome to grow up together with Egreat!

This user guide with detailed description for using the product, in order to let you learn about how to use this 4K Blu-ray media player, please read it carefully before using.

The product specifications and features may change when the product is released the update software, please refer to the actual product for the use methods after upgrading.

Table of contents

Table of contents	4
Chapter 1 Main features	6
Chapter 2 Connection interface	8
I, Connection interface.....	8
II, Remote control button	10
Chapter 3 Connection and installation	12
Chapter 4 Initial settings	14
I, Video output settings.....	14
II, Audio output settings	15
III, Network settings.....	18
Chapter 5 Operation interface	21
I, Home page interface description.....	21
II, "More" column interface description.....	22
III, "My APPs" interface description.....	23
Chapter 6 Local play	26
I, Remote control button function.....	26
II, Poster wall function.....	27
III, Blu-ray navigation menu function.....	31
IV, Video file play	34
V, Add extended font of special effects subtitles.....	46
VI, Imprex image processing engine	47
VII, Music file play.....	49
VIII, Photo file play	50
IX, File browsing.....	51
Chapter 7 XBMC introduction	54
Chapter 8 Application installation	56
Chapter 9 Quick settings	58
I, General settings.....	58
II, Display settings.....	59
IV, Sound settings.....	61
V, Subtitle settings.....	62
VI, About settings.....	63
Chapter 10 Advanced system settings	64
Chapter 11 Intelligent Home	66
Chapter 12 Firmware update	67
Chapter 13 Remote control learning key	71
Chapter 14 Specification parameter	72
I, Hardware	72
II, Format.....	73

Chapter 1 Main features

This machine is a professional 4K Blu-ray media player, the main features are as below.

1. 4K Blu-ray media player with full function blu-ray menu.
2. Wide color gamut HDR/HDR10, 10bit deep color, 1.07 billion kinds of color rendering, bring you with the experience of lifelike visual effect which never had.
3. Automatic movie poster show video details with different process of movie selection.
4. 4k@60hz point to point video output, perfect fit display equipment, show you the highest quality of the picture.
5. The industry's first DTS & Dolby certification, the perfect support for a new generation of ATMOS/DTS:X audio passthrough output.
6. H.265/HEVC true 4K hardware decoding, smooth decoding up to 200Mbps high bit rate.
7. 1000M adaptive wired network, 802.11 b/g/n/ac speed wireless network, play smoothly in local area network.
8. Support Samba/NFS LAN sharing, play 4K/3D very clear movie, no need to plug and copy the movie frequently.
9. Support U-Disk, mobile hard disk, 2T~8T GPT format super hard disk read & play.
10. Support all format Blu-ray 3D movie play, let you experience the effect of 3D theater at home.
11. One key intelligent switching movie audio track & subtitles, no need further layer set.
12. Built-in NSS HDD tray, support plug in & out more than 100,000 times.
13. Intelligent cooling fans.
14. Large white LED display panel, let you know the working status of the machine at any time, luxurious & generous.

Egreat 4K Blu-ray Media Player

15. 4core 64bit A53 processor, android 5.1 intelligent operating system.
16. Built-in 3.5 inch HDD tray.
17. Built-in AC-DC power supply.
18. Support Control4 and RS232 smart control system.

Chapter 2 Connection interface

I, Connection interface

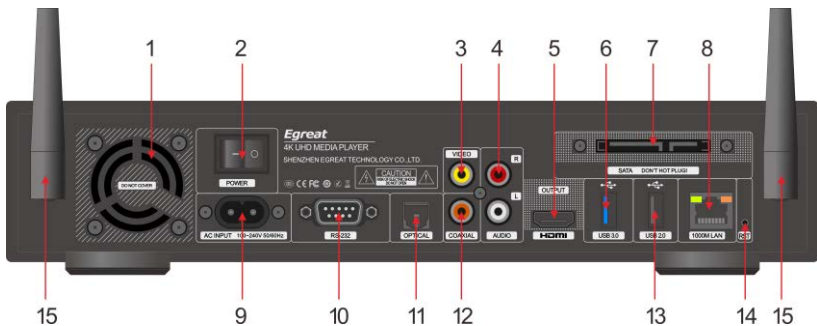
This machine is equipped with abundant of input and output interfaces, please refer to the contents of this chapter to know the player's interface functions.

Front



1. Standby indicator
2. Remote control receiving window
3. LED display panel
4. Built-in HDD tray

Back

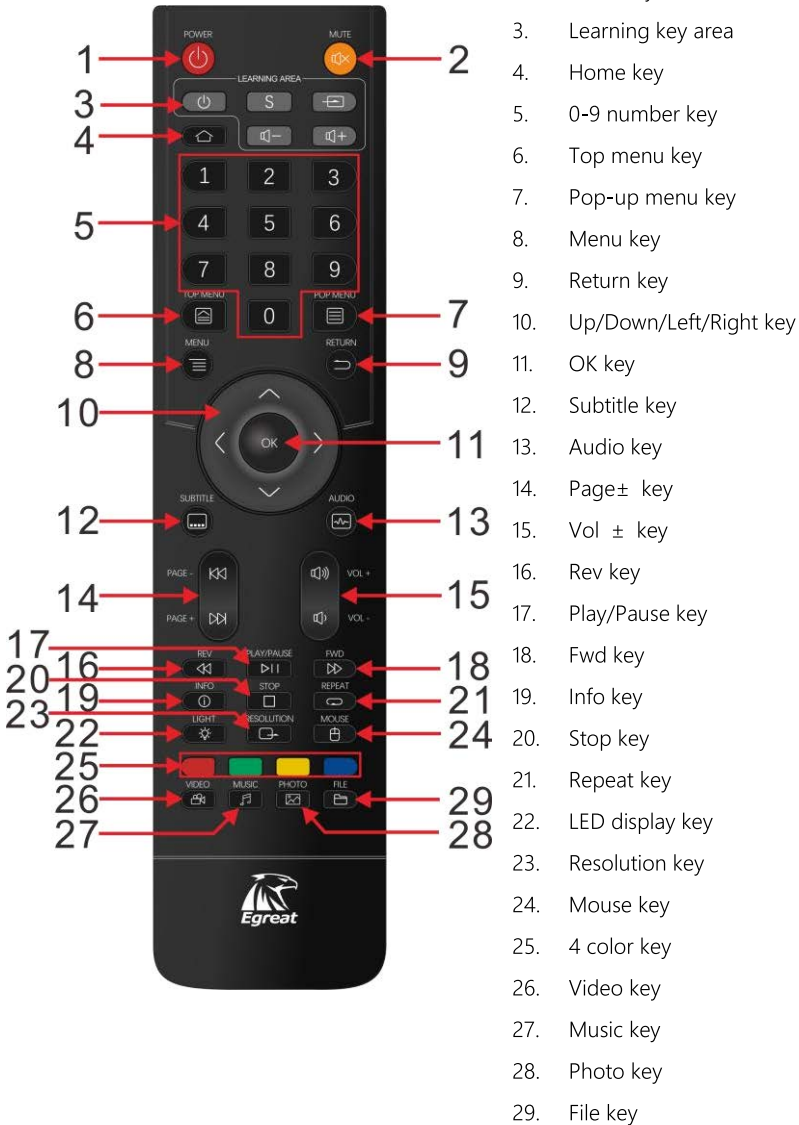


1. Cooling fan
2. Power switch
3. Composite video output
4. Left & Right channel audio output
5. 4K HDMI output
6. USB3.0 interface
7. SATA interface
8. Wired network interface
9. AC power input
10. RS232 interface
11. Optical audio output
12. Coaxial audio output
13. USB2.0 interface
14. Forced recovery button
15. Wireless network antenna

Note

- Please don't plug the HDMI cable or hard disk in the charged state to avoid damage to the machine.
- Please do not put anything into the machine cooling fan.
- Please don't pour the liquid on the machine, so as not to cause damage to the machine.
- There is no spare part of the machine in the package, the nonprofessionals do not disassemble the machine.
- The built-in hard disk can only use 3.5 inch standard SATA hard disk, do not load anything else.
- Do not take out or put in the hard disk when the machine is upside down.

II, Remote control button



Egreat 4K Blu-ray Media Player

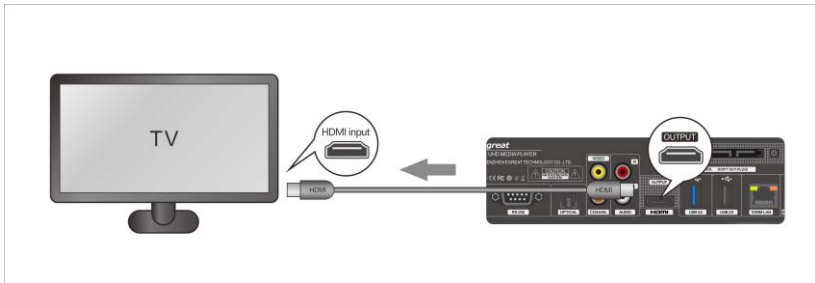
Note

- The key of the remote control with multiple functions, which detailed in the description of the following chapters.
- The functions of the learning keys are detailed in the description of the following special chapter.

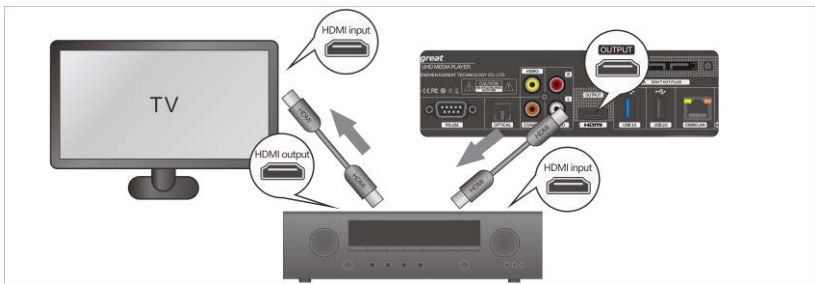
Chapter 3 Connection and installation

Method for connecting TV

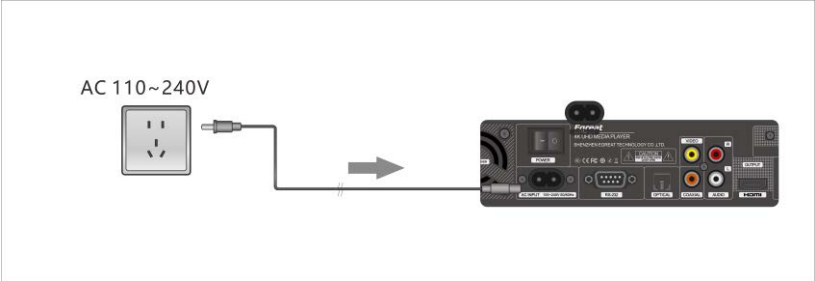
Please turn off the power of the TV and media player first, then connect the media player and TV with the HDMI cable.



If you use an audio power amplifier, please use the HDMI or optical cable to connect the TV to the amplifier, then connect the amplifier to the media player.



This product comes along with a AC power cable, please plug one end of the AC power cable with the media player AC in power port, then plug the other end of the AC power cable with 110~240V AC out power socket.



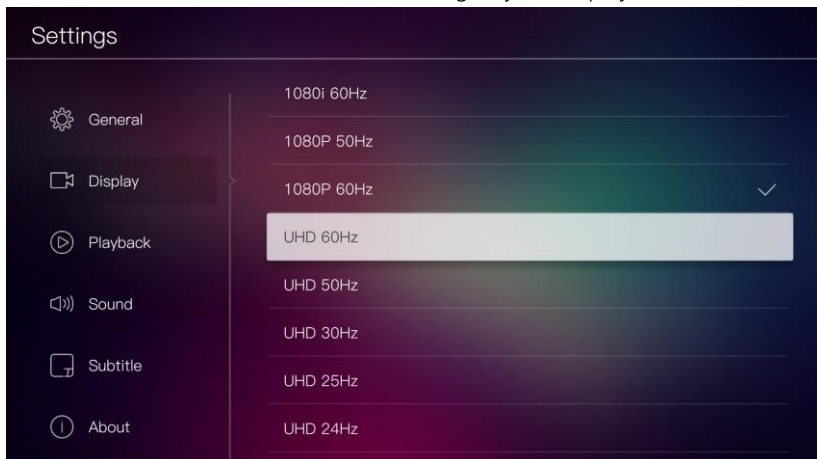
Chapter 4 Initial settings

To have a better experience, please connect this machine to the internet first, then set the most suitable audio and video output modes of this player according to the modes supported by your audio and video devices (such as audio power amplifier, TV and projector).

I, Video output settings

This machine can automatically recognize the perfect video resolution output according to the TV settings when connected with TV via HDMI cable. But in some cases or in the case of using composite video output, you need manually adjust the video resolution output to the perfect status.

Please select “Settings” from the home page and choose “Display”, then select the suitable resolution according to your display device.



If you connect to the traditional picture tube TV via the composite video cable, please choose the “576P” or “480P” video output.

If you connect to the normal TV via the HDMI cable, please choose the “1080P” video output.

If you connect to the 4K TV, strongly recommend to choose the “UHD

Egreat 4K Blu-ray Media Player

60Hz” video output, so as to achieve the best display effect of the 4K TV.

Note

- If there is no screen display after switching resolution, please wait 15 seconds not to operate, the machine will automatically switch back to the previous resolution.
- The resolution is not as higher as better, please refer to the best resolution supported by the display device.
- 4K resolution (UHD 60Hz, UHD 50Hz, UHD 30Hz, UHD 25Hz, UHD 24Hz) , you must ensure that the HDMI cable, audio power amplifier (if used), the projector and other devices all can be used to support the 4K.

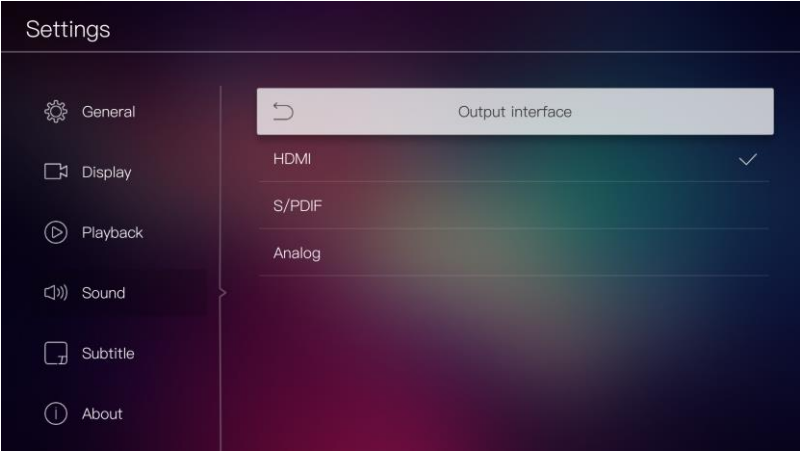
II, Audio output settings

If you connect this machine directly to the TV without the audio power amplifier, please select “Settings” from the home page and choose “Sound”, enter “Passthrough”, then select “Off”, so the player will be “LPCM” audio format output, the TV can make a normal sound.

If you connect the machine to the audio power amplifier, please read this section carefully.

To get the best audio effect of the audio power amplifier, you need to set the machine to output the appropriate audio format.

First, please select “Settings” from the home page and choose “Sound”, then select “Output interface” option.

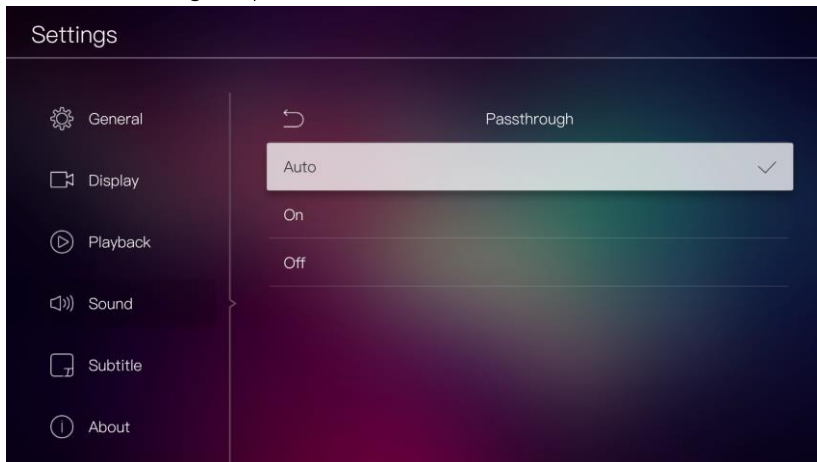


If you connect to the audio power amplifier via the HDMI HD cable, please select the "HDMI" option;

If you connect to the audio power amplifier via the optical or coaxial cable, please select the "S/PDIF" option.

If you connect to the audio power amplifier via analog audio cable (the red and white cable in the composite video cable group), please select the "Analog" option. *Note, after selected the "Analog" option, no need to set the following "Passthrough" option and "Amplifier compatibility" option.*

Next, please select "Settings" from the home page and choose "Sound", select "Passthrough" option.

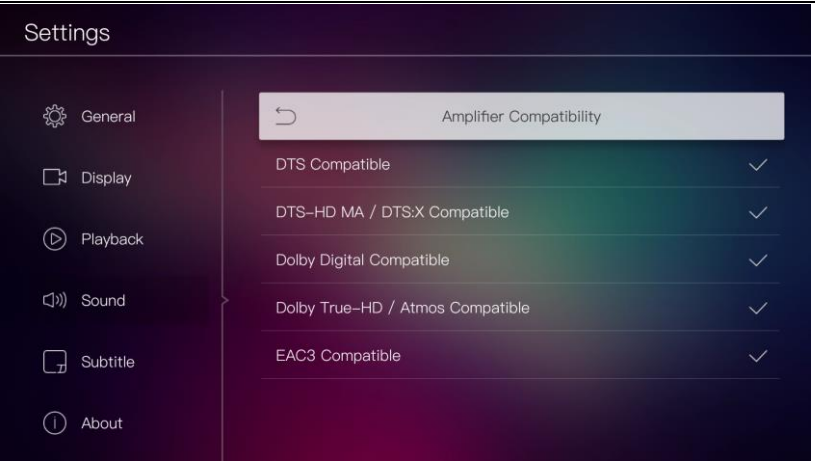


If you want the player to output the audio decoding format, please select the "Off" option to turn off the passthrough output.

If you want the player to output the audio passthrough format, please select the "On" option to turn on the passthrough output.

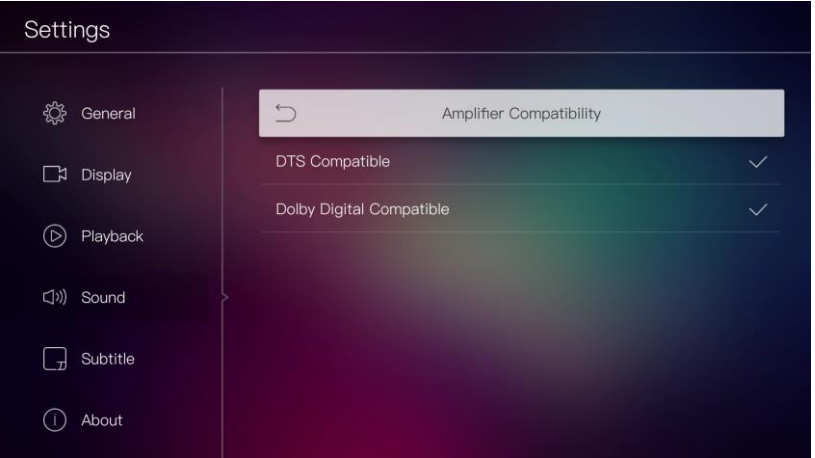
In the case of turning on passthrough output, please select the "Settings" from the home page and choose "Sound", select "Amplifier compatibility" option.

Egreat 4K Blu-ray Media Player



In the “Amplifier compatibility” option, please select the corresponding audio format options according to the support situation of your audio power amplifier for audio format of DTS, DTS-HDMA/DTS:X, Dolby Digital, Dolby True-HD/Atmos and EAC3.

For example, if your audio power amplifier only support DTS and Dolby Digital audio decoding, please select “DTS” and “Dolby Digital” two options.

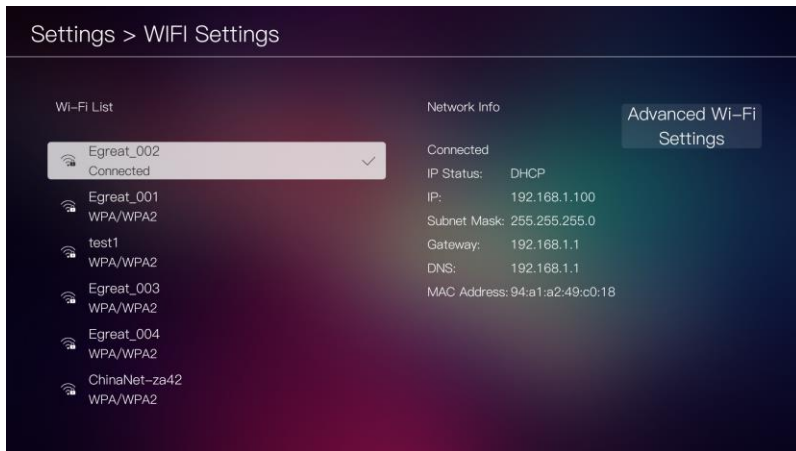


Note ● If the selection is not appropriate, it may cause the movie no sound when play or can't reach the best effect. Please refer to the user guide or specifications of the audio power amplifier when needed.

III, Network settings

Select “Settings” from the home page and enter “General” as below,

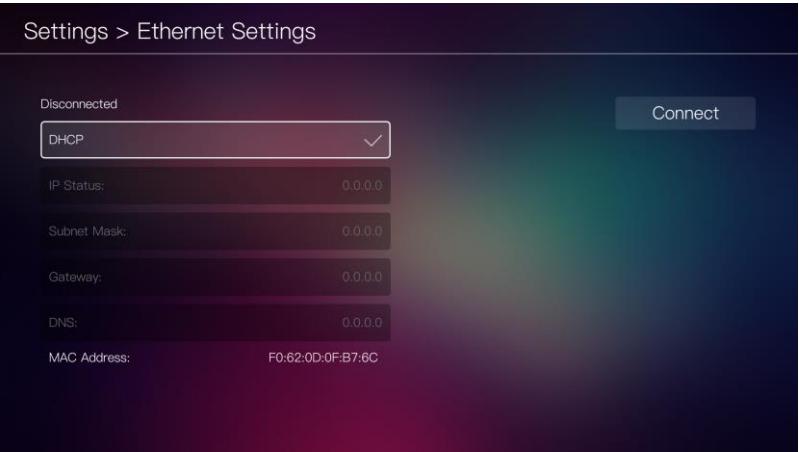
If you use the wireless network, please select and turn on “Wi-Fi” in “General” option, the system will search and list out all nearby Wi-Fi signals after a while, please select the one you want to connect and login with the password, the connection information of the wireless network will be displayed after the connection.



If you use the wired network, please connect the network cable, select and turn on “Ethernet” in “General” option, then the system will connect to the internet automatically, the connection information of the wired network will be displayed after the connection.

When using a wired network connection, if you select the “DHCP” option, then the system will automatically assign the IP address and automatically connect to the wired network. If you haven't selected the “DHCP” option, you need to manually enter the IP address, subnet mask, gateway and DNS related information, the system will configure the wired network and automatically connect according to the manually entered information.

Egreat 4K Blu-ray Media Player



This machine is equipped with Bluetooth 4.0 function, if you need connect the Bluetooth device, please select “Settings” from the home page and enter “General”, select and turn on the “Bluetooth” option.



Note

- This machine is “wired network first” design, please pull the wired network cable interface out of the machine when you need to use the wireless network, otherwise, the machine will be wired to connect to the internet by default.

After the network is properly connected, the top right corner of the home

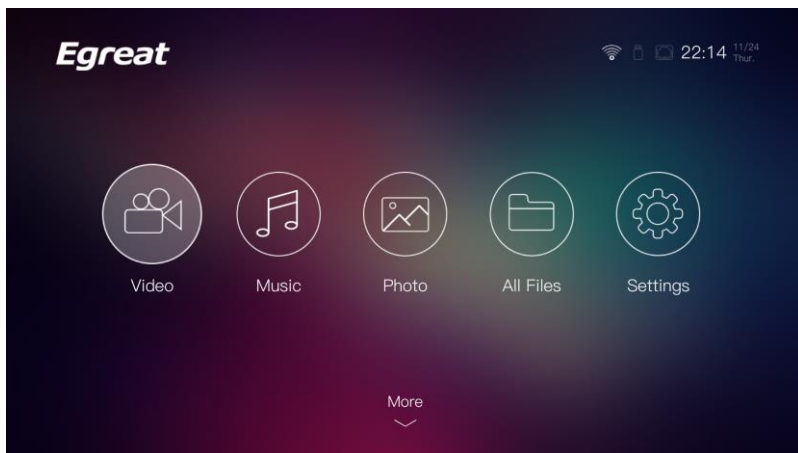
page will show the wired network or wireless network connection icon, and the LED display panel of this machine will also show the wired network or wireless network connection icon.

Note

- More settings are located in the system advanced settings option, you can enter from "Settings", "General", "More settings".

Chapter 5 Operation interface

I, Home page interface description



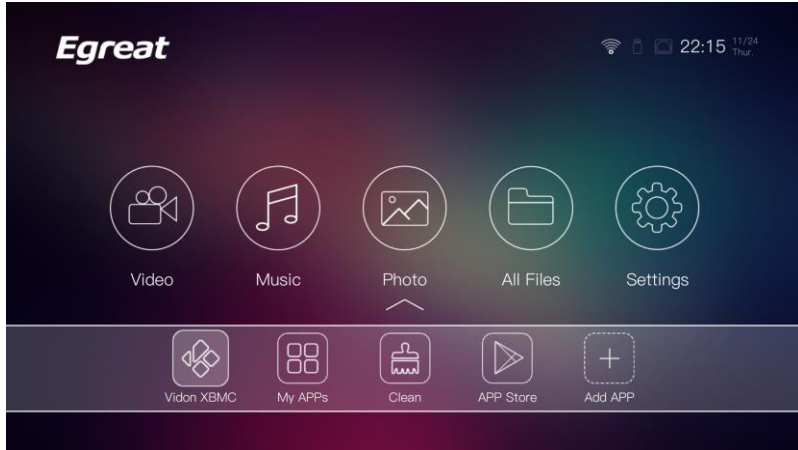
In the home page, the top right of the home page will show the current clock / date / week / wired network / wireless network /USB device information, etc.

There are several large circular function icons in the middle of the home page interface, from left to right, the functions are as below.

1. Video: Browse the video files located in the local area and local area network for the video play.
2. Music: Browse the music files located in the local area and local area network for the music play.
3. Photo: Browse the photo files located in the local area and local area network for the photo play.
4. All files: View all storage devices connected to this machine and all shared files in the local area network, can install the applications and open the files in various formats from here, and rename, copy, paste, remove the files through here and so on.
5. Settings: Enter the quick settings and adjust some functions and effects

of this machine.

There is a smaller “More” icon at the bottom of the home page interface, you can press the “Down” key of the remote control to enter the “More” column.



From left to right, the functions are as below.

1. Vidon XBMC: Enter a powerful multimedia file play software XBMC (KODI) .

2. My APPs: View all applications that have been installed in this machine, and start running them or clear data, sort or uninstall and so on.

3. Clean: After running a lot of applications, the resources of the machine may be occupied too much and cause the system to slow down, these wasted resources can be released through this function, and recover the running speed of the machine again.

4. APP Store: Enter the APP Store, install your favorite applications.

5. Add APP: Add a shortcut of the application used frequently to the “More” column, and no longer need to be hard to choose from the list of “My APPs”.

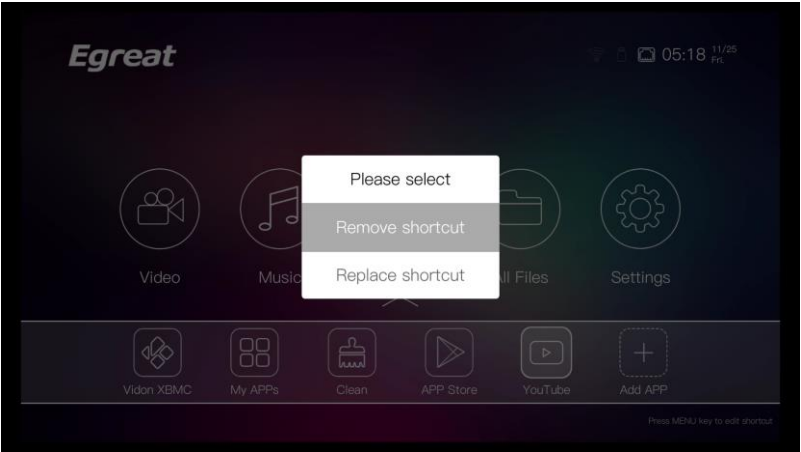
II, “More” column interface description

By using the “Add APP” button in the “More” column, allows you to add a shortcut of the application used frequently to the “More” column, thus

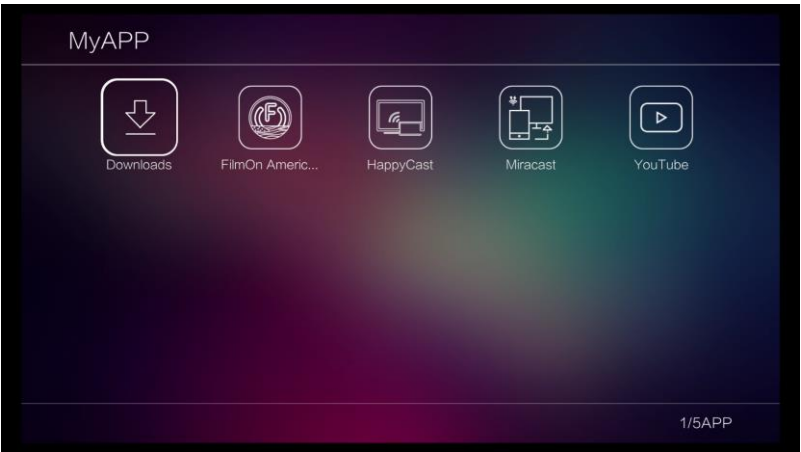
Egreat 4K Blu-ray Media Player

you can quickly start the application when need to use.

In the “More” column, move the operation focus to the shortcut of the application that has been added, press the menu key of the remote control, you can remove or replace the shortcut.



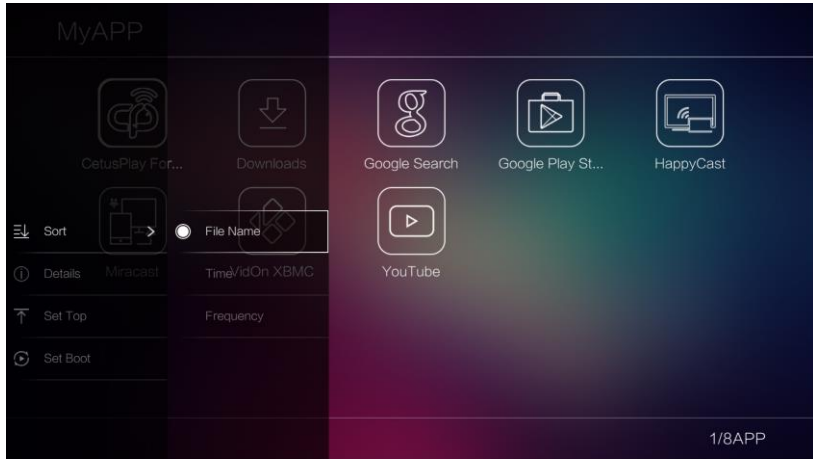
III, “My APPs” interface description



In “My APPs” interface, will list out all applications installed in this machine for users to select to use, usually the more newly installed applications will be ranked in the back.

In “My APPs” interface, press the menu key, open the option menu for

sorting and other management operations.



The function of option menu from top to bottom are as below.

1. Sorting: Set the arrangement method of the applications in this interface, and arrange the application icons according to the file name, time and frequency of use.
2. Details: Show the storage use status of the selected application and operational requirement information and so on, and also can be forced to terminate the operation of program or even uninstall and so on.
3. Set Top: Be forced to set an application icon to the first icon display location.
4. Uninstall: Uninstall and remove the selected application from this machine.
5. Set Boot: Set the specified application to boot automatically, that is, the machine will automatically enter the specified application after boot, and does not require the user to operate.

Note

- In order to ensure the normal function of this machine, please do not uninstall the native applications.
- The native application will be added or reduced because of different versions of the system, this is not a loss of the machine function.
- In different system language environment, some applications are not

suitable for use in this language environment, thus the machine will automatically hide these applications.

Chapter 6 Local play

Local play mainly refers to the function of playing the multimedia files in the mobile hard disk, U-Disk, card reader, mobile phone and computer connected in a variety of interfaces to this machine or in other devices through wired or wireless connection to the machine's internal local area network. Mainly play movie, music and picture.

I, Remote control button function

In local play, the remote control will play a significant role, which can realize all the play control through the remote control, please refer to the button functions of the remote control as below.

Up/Down key: Move the operation focus or switch the chapter, etc.

Left/Right key: Move the operation focus, drag the progress bar or switch the songs, etc.

OK Key: Confirm the selection, pause / resume the play, etc.

Settings key: Quick access to the quick settings.

Return key: Close the option menu, exit the settings, exit the play, etc.

Prev/Next: Play the previous / next file or chapter, page up and page down, etc.

Subtitle key: Loop switch the movie's built-in and external subtitles or close the subtitles.

Audio key: Delete the character entered before/loop switch the movie's audio track.

Vol+/Vol- key: Adjust the volume of this machine at any time (Invalid under the passthrough output).

Mute key: Mute / resume the volume.

Home key: Jump out of the application and quickly back to the home page.

LED display panel key: Turn On/Off the LED display panel on this machine.

Top menu key: Back to the top menu of the Blu-ray navigation.

Pop-up menu key: Call out the Blu-ray navigation pop-up menu.

Repeat key: Set the repeat mode of the play.

Stop key: Directly out of play

Fast-forward key: In 2x, 4x, 8x, 16x rate fast-forward play.

Fast-back key: In 2x, 4x, 8x, 16x rate fast-back play.

Info key: Display the information of the video being played.

Learning key area: Learn to remote control the other devices.

(See the detailed introduction of the related chapter)

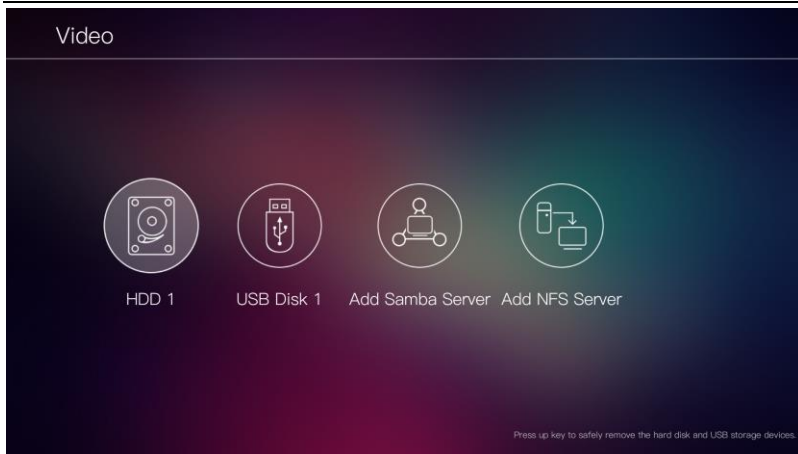
Note

- The subtitle key can only be valid when the movie has the built-in subtitles or external subtitles.
- The audio track key can only be valid when the movie has a number of built-in audio tracks.
- Button functions will be changed with the application in use or current state.

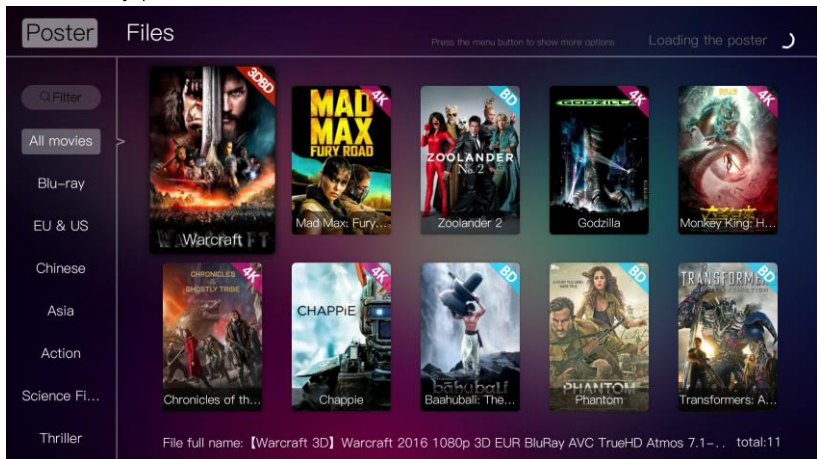
II, Poster wall function

This machine has the function of automatic poster wall, can automatically match and download the movie posters and related information online according to all kinds of video files stored in the folder at any location of the mobile hard disk, U-disk and network sharing, and complete the whole process intelligently and automatically, no need manual intervention to complete.

Please enter the "Video" icon from the home page, select the storage device that you need to access and browse.



After entering the storage device, the system will fully search and establish the local poster wall database, automatically match the beautiful movie cover posters and background pictures from the cloud poster server, immediately present out.

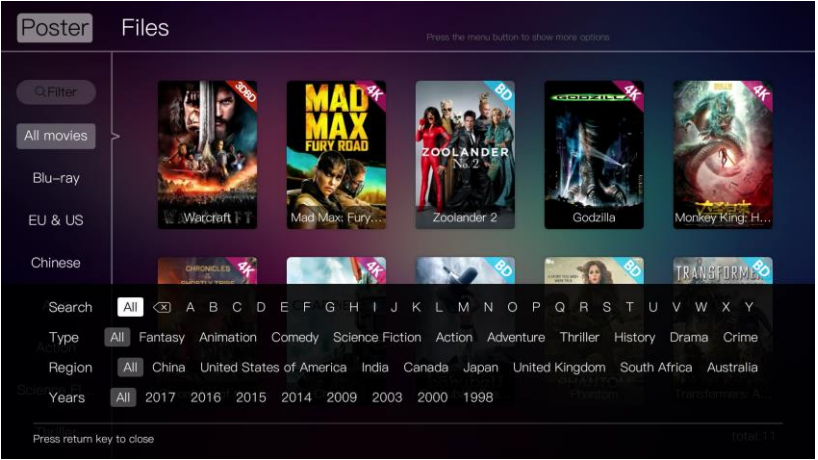


In the "Posters" interface, move the operation focus to the picture of the cover poster of a movie, press OK key to enter, you can see the gorgeous background picture, at this point, you can select one of the play modes from "Navigation", "Main movie" and "Other titles" to play the movie.

Egreat 4K Blu-ray Media Player



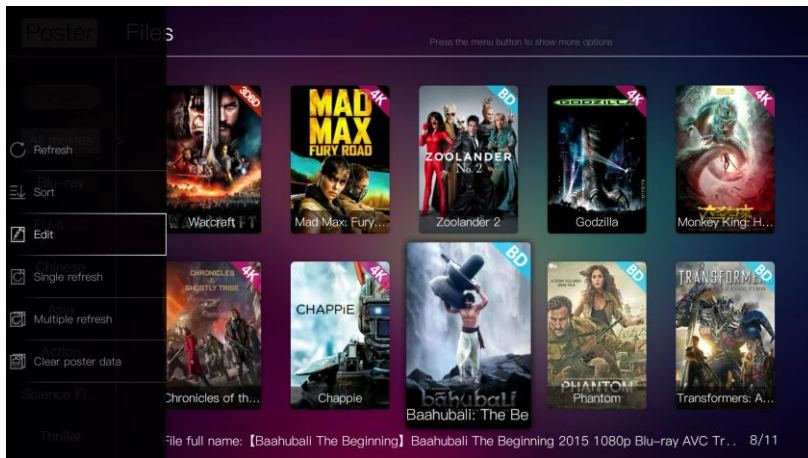
In the "Posters" interface, move the operation focus to the "Filter", you can search the movie which you want to watch according to the first letter, type, region and years or combination of the movie.



Note ● You need to connect the internet to get the poster pictures, background pictures and movie information.

Menu Function

Press menu key to open menu list

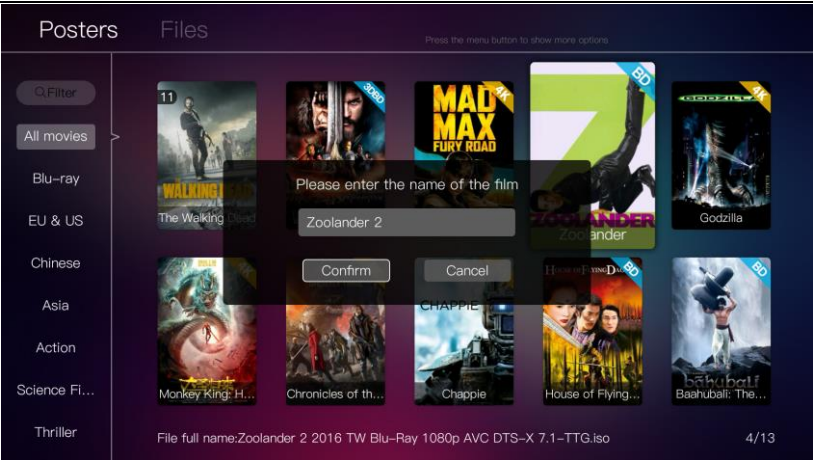


1. Refresh: refresh new adding posters data by hand
2. Sort: posters sort by "file date", "release date", "name", "score".
3. Edit: revise the wrong poster recognition and search again by hand.
4. Single refresh: move the operation focus to one poster, only refresh this poster.
5. Multiple refresh: after first time select, then mark on the right corner of the posters to be refreshed.
6. Clear poster data: If some posters can't be searched, then clear poster data and refresh poster data.

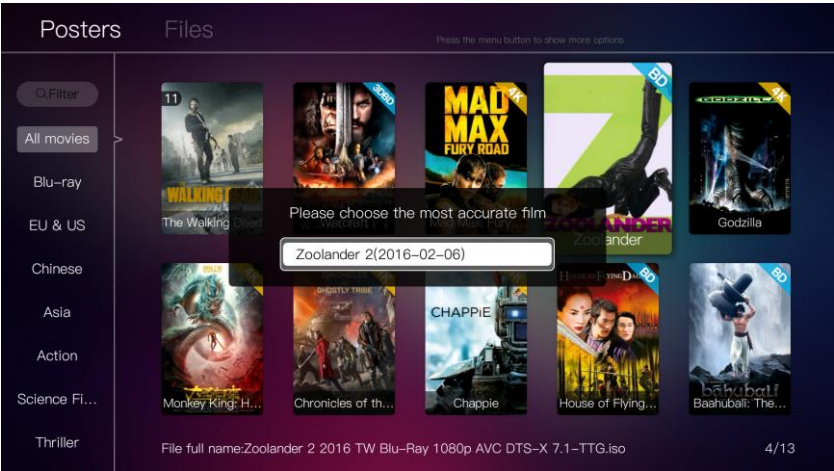
Edit Function

Move the operation focus to the wrong poster, choose edit, type in right movie name (please use mouse operation)

Egreat 4K Blu-ray Media Player

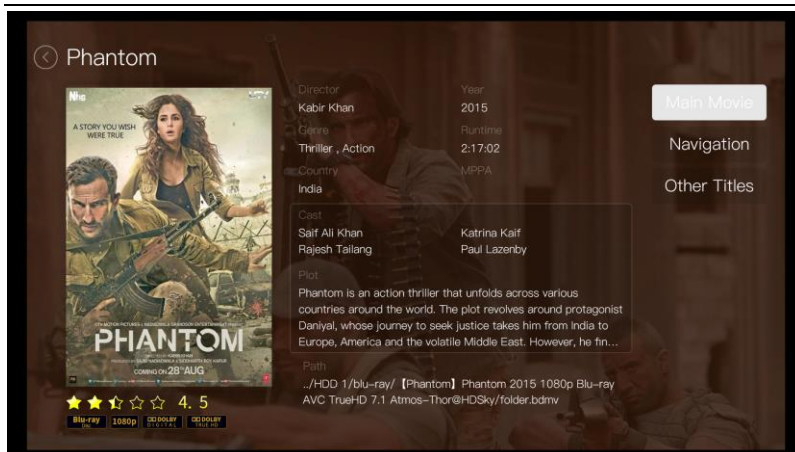


After select "confirm", then choose the most precise movie name and refresh the new poster immediately.

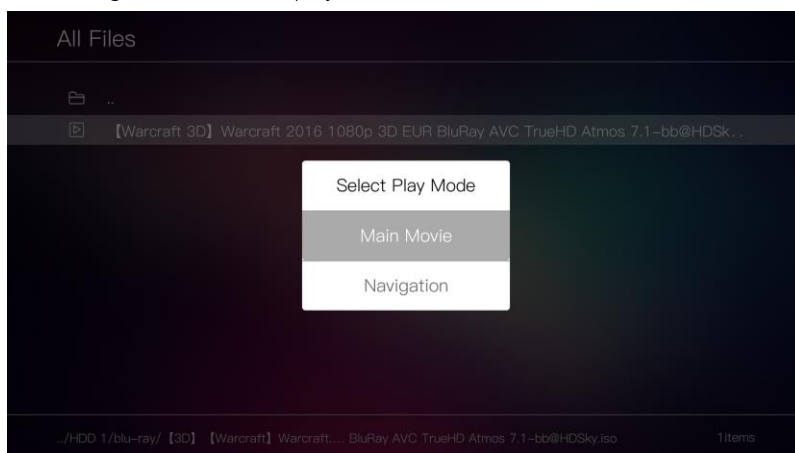


III, Blu-ray navigation menu function

When select the movie to play in the "Video" and "Posters" interface, you can select the "Navigation" mode to play the movie.



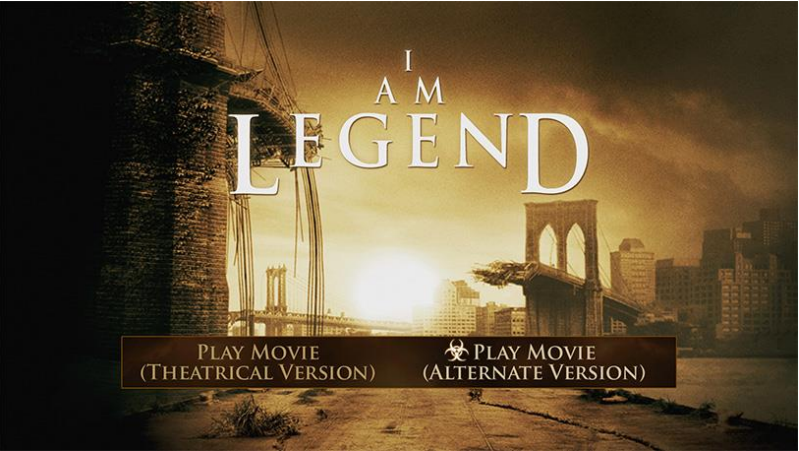
When select the movie to play in the “All files” interface, you can select the “Navigation” mode to play the movie.



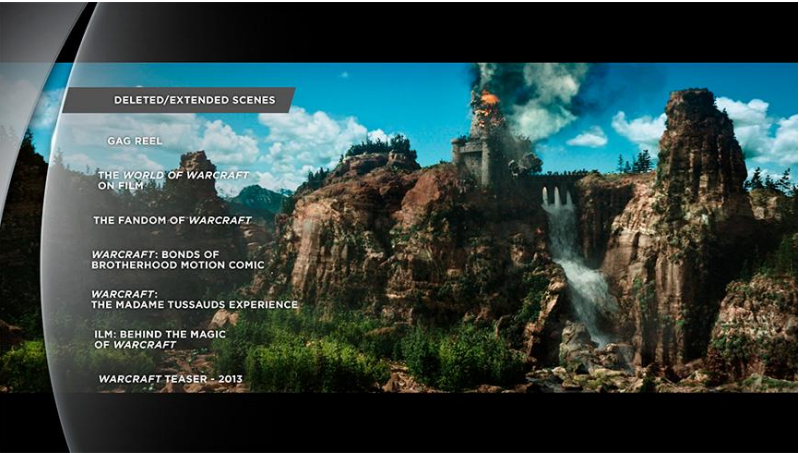
When select the “Navigation” mode to play the movie, you can enjoy the full content of the production and release of the Blu-ray movie. For example, the different endings of the movie, the scenes and clips deleted before releasing, the comments from the director and actor, the creation experience of shooting, the production process of the dazzling special effects and so on.

For example, the movie 《I am legend》, you can select the “Theatrical version” or “Alternate version” to play the movie through the Blu-ray

navigation menu.



For example, the movie《Warcraft》, you can select the deletion clips, creation experience, shooting site attached and so on to enjoy through the Blu-ray navigation menu.



IV, Video file play

In addition to select the "Navigation" mode to play the movie, you can also select the "Main movie" mode to play the movie

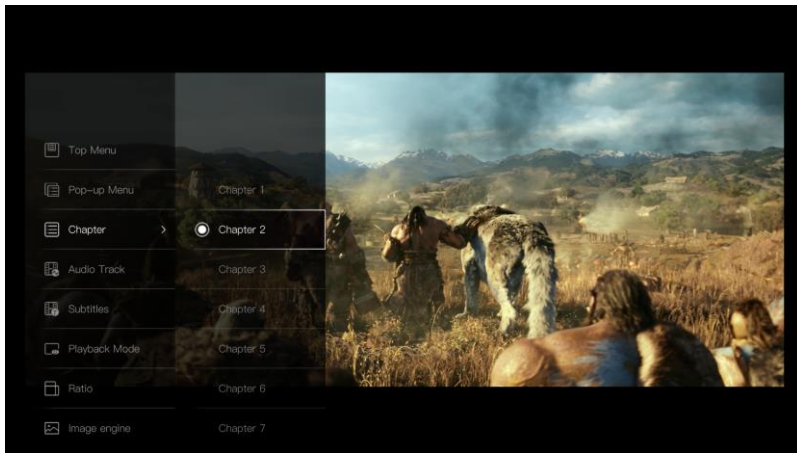
Select the video file you want to play, select the "Main movie" mode, press the OK key to play.



Press the "OK" key when playing, you can switch between the suspended and playing status. Hold down the "left or right" key, you can adjust the play progress bar for selecting play.

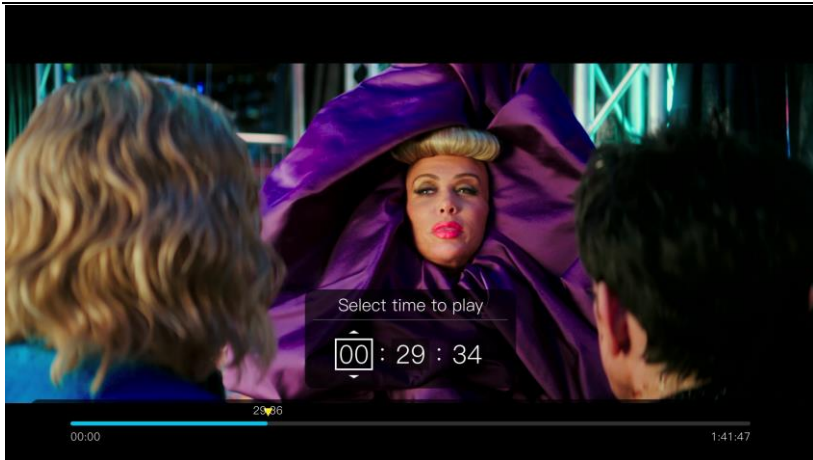


Option settings function

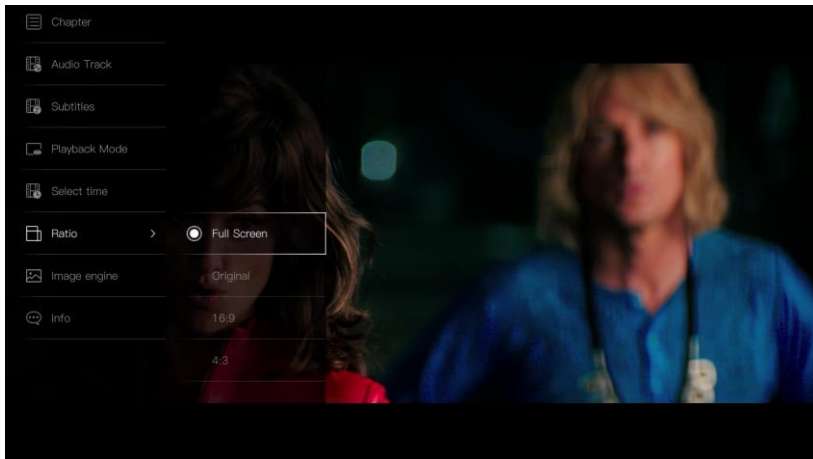


For the video file play, we have developed a large number of the advanced settings functions for the users, please press the Menu key to open the option settings list, the settings are as follows.

1. Top Menu: Open the top menu of the Blu-ray movie (only for the "Navigation" mode play).
2. Pop-up Menu: Call out the Blu-ray movie pop-up menu (only for the "Navigation" mode play).
3. Chapter: Select the different chapters and sections of the movie to play.
4. Audio Track: Select the different audio tracks of the movie.
5. Subtitles: Select the movie's built-in or external subtitles, and also can get online subtitles through the internet.
6. Play Mode: Switch the movie play mode between the 3D and 2D mode.
7. Select Time: Custom Hour/Minute/Second play



8. Ratio: Adjust the display ratio of the movie.



9. Image Engine: Open the image processing engine, adjust the picture play effect.

10. Info: View the format information of the movie being played.

Top menu option



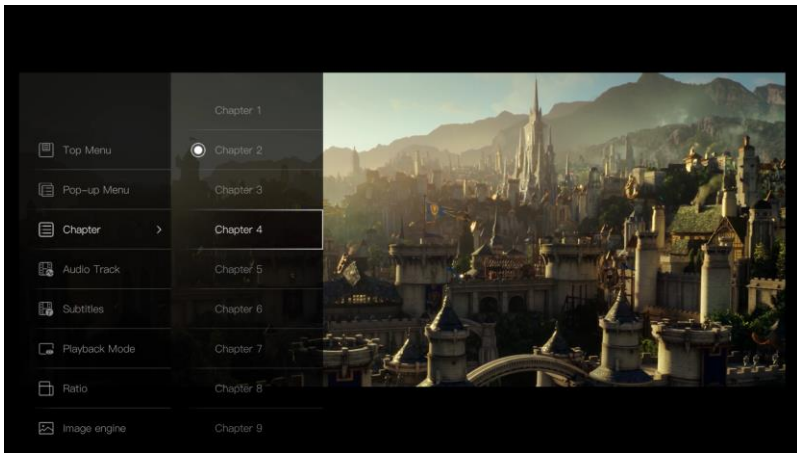
Select the “Top Menu” in the “Options” interface, can go back to the top menu of the Blu-ray navigation of the movie. Please refer to the details of the Blu-ray navigation menu in the last chapter.

Pop-up Menu option



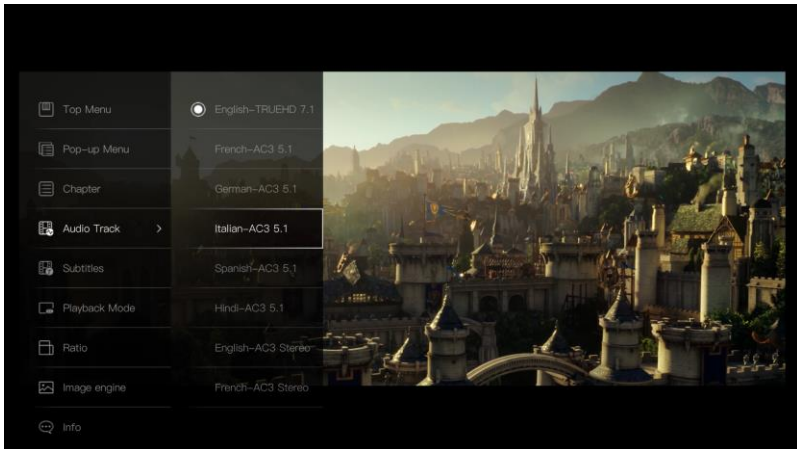
Select the “Pop-up Menu” in the “Options” interface, can call out the pop-up menu of the Blu-ray navigation of the movie, immediately control the play of the movie.

Chapter settings option



Select the “Chapter” in the “Options” interface, you can see how many chapters are divided in the current play list of the movie being played, and can arbitrarily choose one of the chapters to play.

Audio track settings option



Select the “Audio Track” in the “Options” interface, you can see all the languages and formats of the audio track contained in the movie being played, and can select according to need.

Press the “Audio” key of the remote control, can switch the audio track quickly and directly, no need to select from this menu.

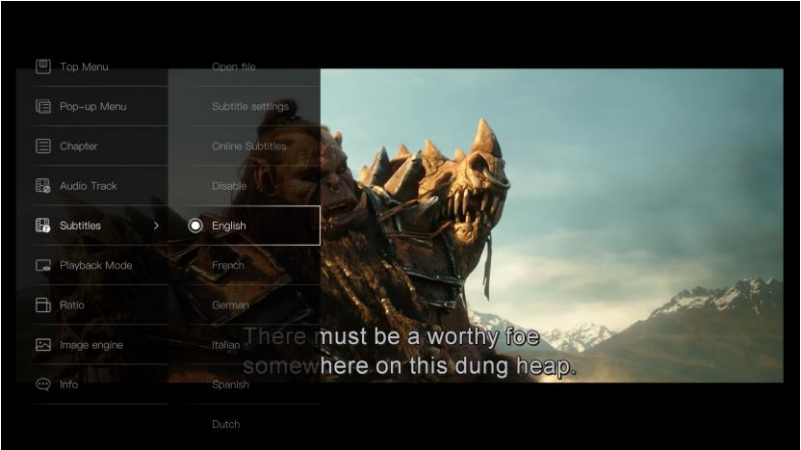
Subtitle settings option

Select the subtitles type in the “Subtitles” of the “Options” interface, then press the OK key to enter the subtitles settings interface, you can check the subtitles information and set the subtitles under this interface.

Embedded subtitles used to display the movie's built-in subtitles in various languages, only support "position" setting, range between ± 1.0 .

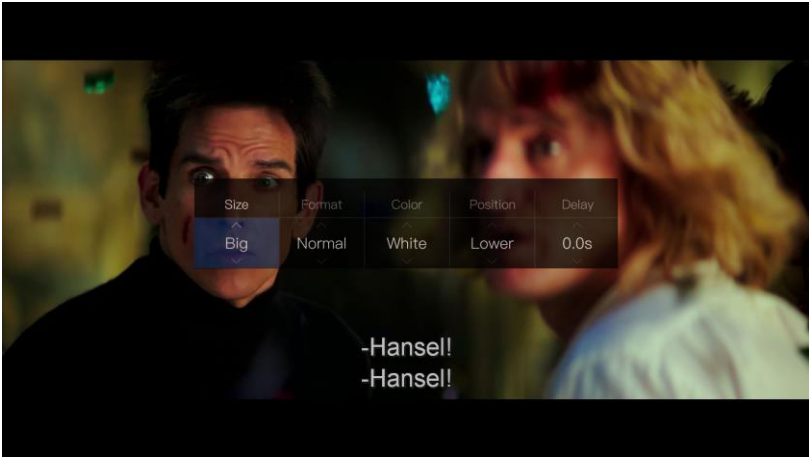


when the movie has no embedded subtitles, you can change the file name of the subtitles file to the same as the file name of the video file, this machine will automatically load the subtitles.

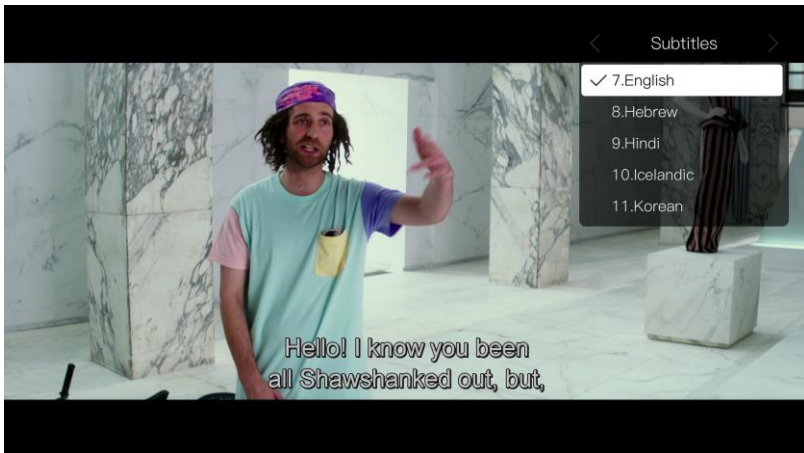


You can change the size, format, color, position, delay and so on of the

external subtitles and partial formats of the embedded subtitles. You can also directly press the “Subtitles” key of the remote control to quickly switch subtitles.



When the movie has a built-in or external ASS special effects subtitles, the player can load a user defined font file, and present out the best effect. Please refer to the following independent chapter for specific operation method.

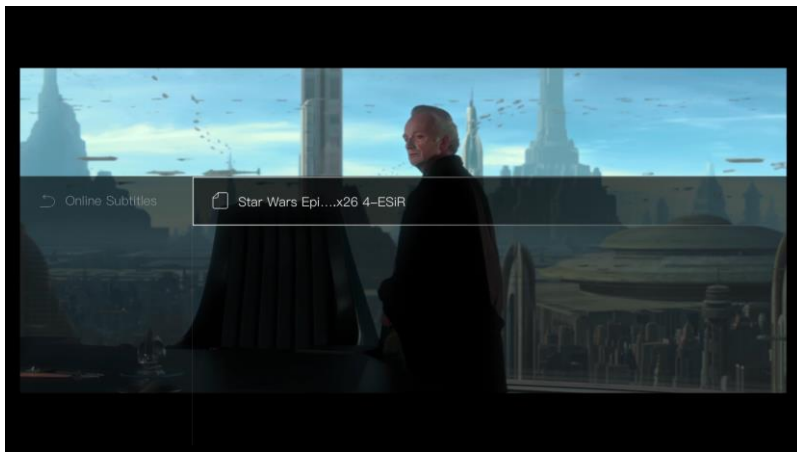


When the movie itself does not have the right subtitles and external subtitles, you can select the “Online subtitles” in the “Subtitles” option, online search the right subtitles through the internet.

Egreat 4K Blu-ray Media Player

Note: This function requires the machine to be connected to the internet before it can be used.

When select the “Online subtitles”, the player will automatically search for the subtitles with the same name as the movie, and then listed out below the interface for the user to select, the user can select one of them, then closed the subtitles menu, the subtitles will be displayed normally. If the selected subtitles poorly coordinate with the movie, you can select the “Online subtitles” function again to select the other subtitles.



Note

- Blu-ray BDMV, ISO, M2TS, MKV, MP4 and other video files may contain embedded subtitles.
- Only SRT, ASS, SSA and other text format of the external subtitles file can be changed the font and size, etc.
- We suggest manually increase the font support, so it can reflect the best effect of ASS special effects subtitles
- It can be automatically loaded and displayed only when the external subtitles and video file name are the same and stored together.
- The built-in subtitles of the Blu-ray movie can't be adjusted the font and size, etc.
- Please store the Blu-ray BDMV external subtitles at the same level as the BDMV folder, if the folder name of the external subtitles and movie are the same, it

will automatically load the external subtitles when the movie being played.

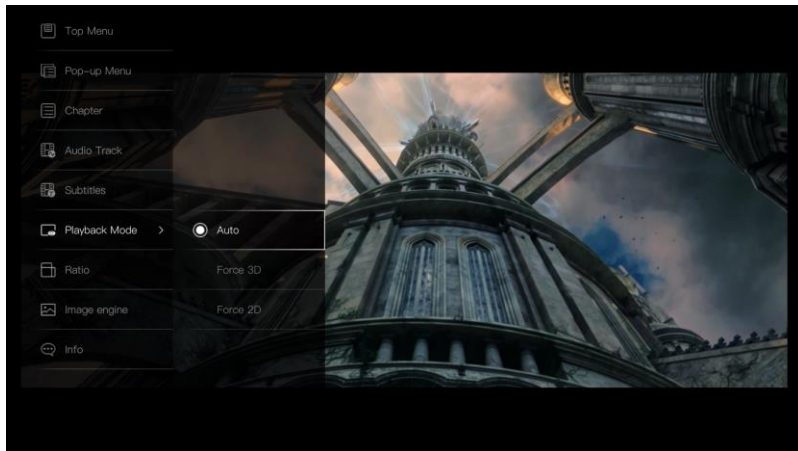
- If the external subtitles occurred messy code phenomenon, please select the appropriate character set in the subtitles option, or saved the subtitles file as UTF-8 encoded text file.

Play mode option

In “Playback Mode” option, you can select the play mode to play the movie.

This mode is determined by the “Play video with 3D mode” option in the “Display” of the system settings, and the default play mode is play video with 3D mode. When this option is turned on, if you play a 3D video, and the display device fully support 3D, then this player will automatically turn on 3D effect, let you enjoy the same 3D picture as the 3D cinema.

If you don't want to play 3D or want to manually turn on 3D mode, then you only need to select the appropriate option in this menu.



Note

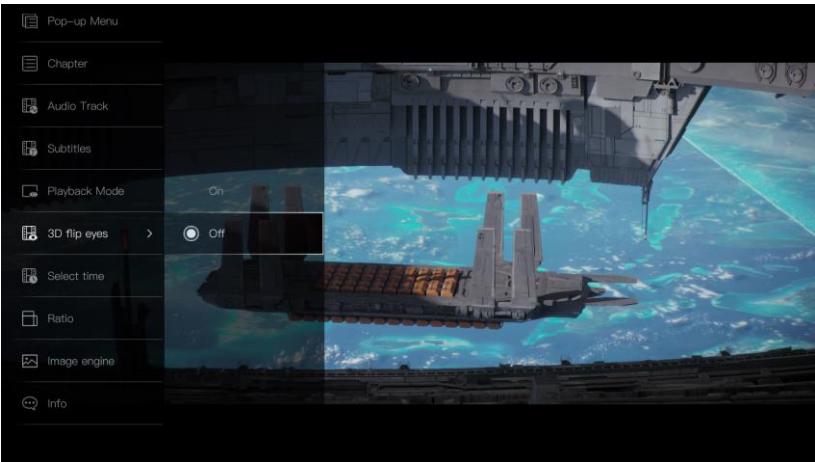
- The 3D function can be turned on only when be in the use of the HDMI interface to connect the display devices (Including the series of audio power amplifier, connecting cables, etc.) that all support the 3D function.
- If you carelessly wrong selected the 3D mode, and lead to the picture disorder, you can exit the play first and then enter again.

3D Depth



The depth setting is set to increase/decrease of subtitle 3d stereo effect. Number is bigger, the depth increasing, the number is smaller, the depth decreasing.

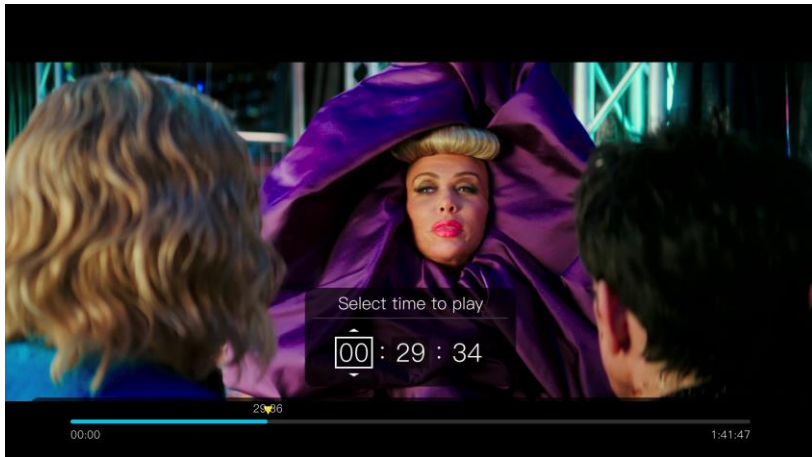
3D flip eyes



3D mode, there is the difference between 3D movies and 3D display device, result in front and back pictures exchange, then can choose "on" or "off" 3D

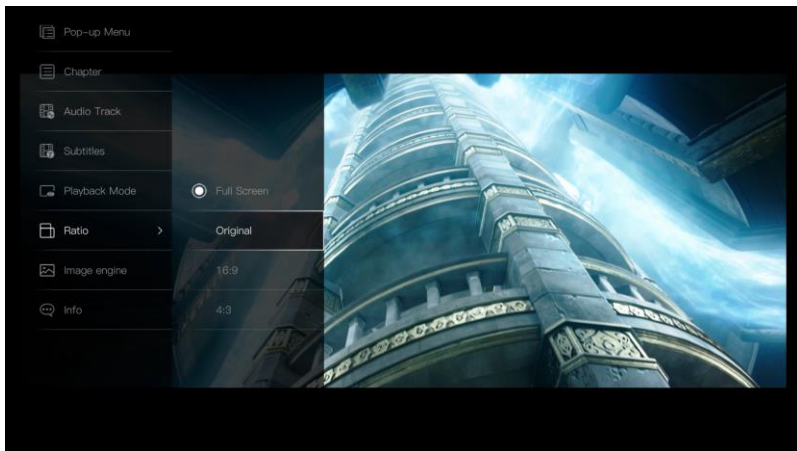
flip eyes.

Select time



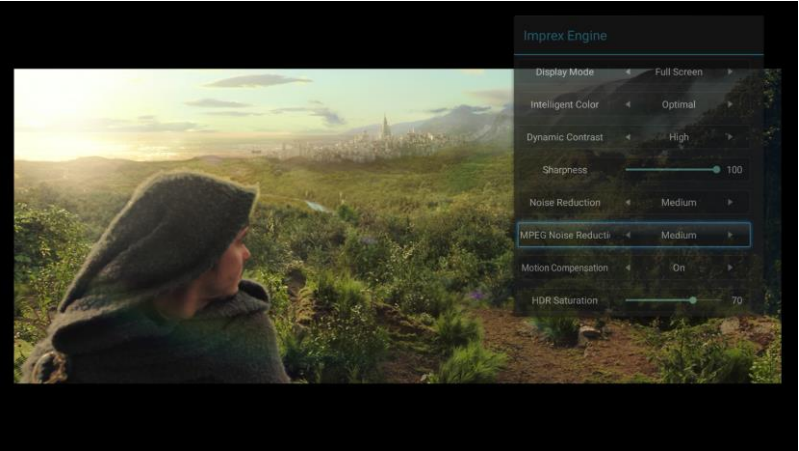
Custom select time to play with Hour/Minute/Second.

Play ratio option



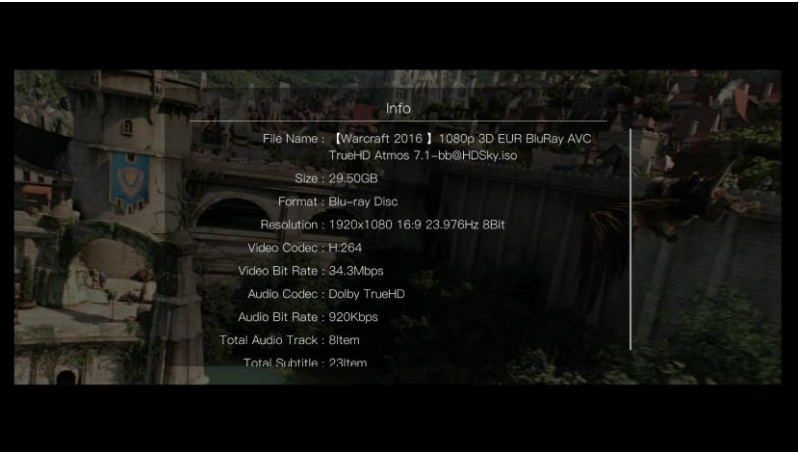
In "Play Ratio" option, you can set the movie screen in "Full Screen", "Original", "16:9" and "4:3" and switch among the four ratios, the default play ratio is "Full Screen" ratio display.

Image engine option



You can optimize the display effect of the image from here, in order to show a better viewing effect. Because there are more settings in this option, please refer to the following introduction in the independent chapter.

Information option

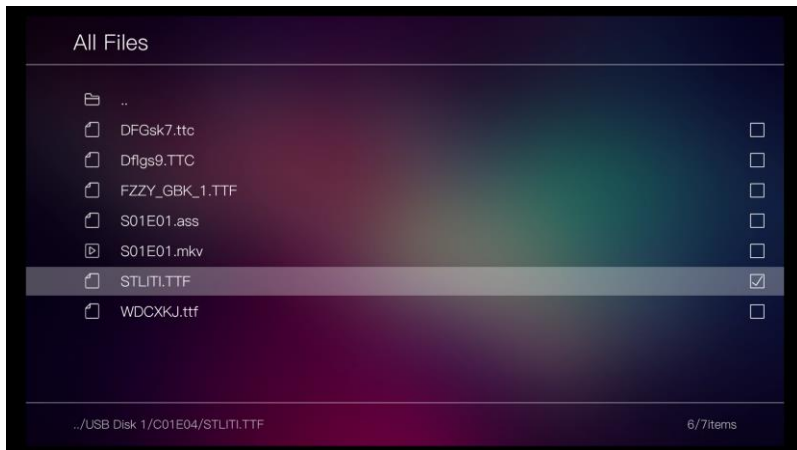


This option is used to view the detailed information about the movie being played, including the file name, size, format, resolution, video codec, video bit rate, audio codec, audio bit rate, total audio track, total subtitles and so on.

V, Add extended font of special effects subtitles

This machine supports the ASS dynamic special effects subtitles, some ASS subtitles use a number of special fonts in order to show better effect, we need to put the font file used by the ASS into the folder set by system to show the best effect, following is the introduction of putting a user-defined font.

First, copy the font file need to be used by ASS(Can be viewed to learn through text editor to open the ASS subtitles file) to a U-disk, mobile hard disk, hard disk or other storage devices, and connect the storage device to the machine.



Then enter the "All files" from the "Home page" and select this storage device to find these font files, press the "Menu" key of the remote control, select "Multi select" from the menu, select all the required font files need to be put in, press "Menu" key again and select "Copy".

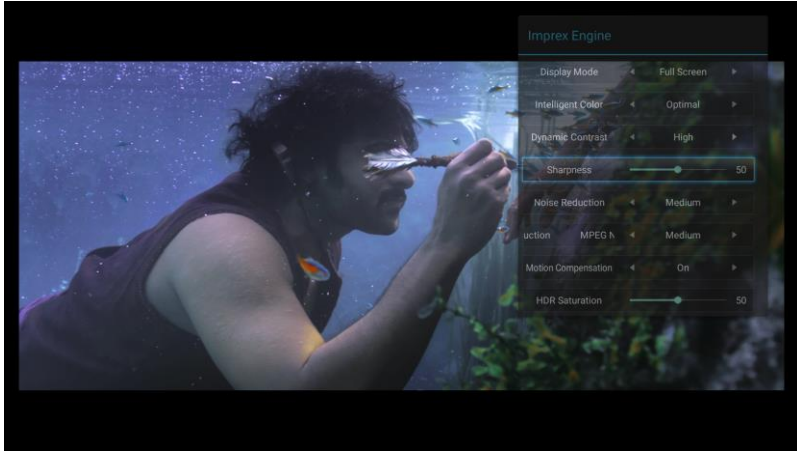


Back to “All files” and select “System Disk”, enter “tvfonts” folder, press “Menu” key and select “Paste”, waiting for the completion of the progress bar of file copying.

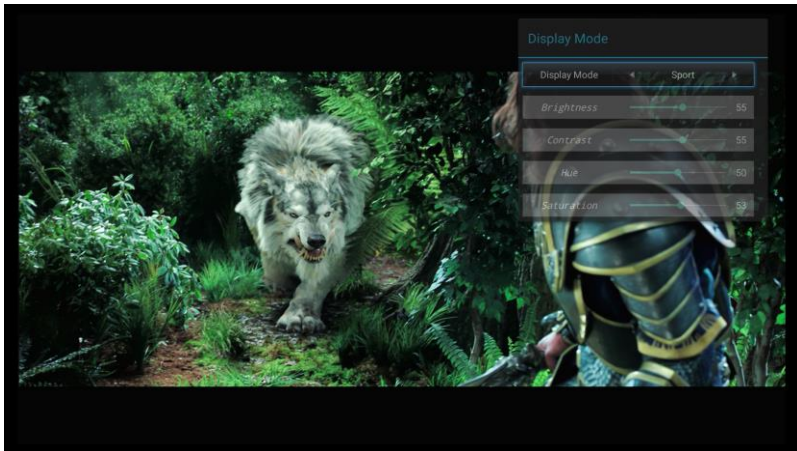
After completion, play ASS special effects subtitles again, then you can see the best effect.

<p>Note</p>	<ul style="list-style-type: none">● The font files are usually *.ttf files, can be found from the PC font folder, or downloaded from the internet.● The font file name and font name are not corresponding, suggest to double click on the PC font file and open the font viewer to confirm if the font name is correct and then copy.● It can correctly display the effect of the ASS special effects subtitles only when the font file exists and the font file name is right.● Some fonts have copyright, please note before use, it has nothing to do with our company as a result of copyright disputes, please bear it by yourself.● If the machine was forced to recovery or restore the factory settings, the font files will be lost, please re copy.
--------------------	--

Imprex is an image processing engine developed specially for this machine, which can maximize optimizing the image processing. Press "Menu" key while playing video, select "Image engine", open image processing engine dialog window.



In the "Display mode" option, you can select from the several modes of "Standard", "Colorful", "Sport", "Theater", "User-defined", if the prefabricated ways can't meet your demand, you can manually select the "Brightness", "Contrast", "Hue", "Saturation" to adjust the image effect.



"Imprex Engine" can do more advanced regulation to the display effect

Egreat 4K Blu-ray Media Player

of the image, including as follows.

1. Intelligent color: Automatically adjust the color effect of the picture according to the picture and color being played, to achieve the more vivid and bright colors.

2. Dynamic contrast: Can enhance the contrast of the picture through this function when the movie is dark and the details are not clear.

3. Sharpness: Can increase the details of the picture to enhance the clarity of the movie.

4. Noise reduction: Reduce the noise in the movie.

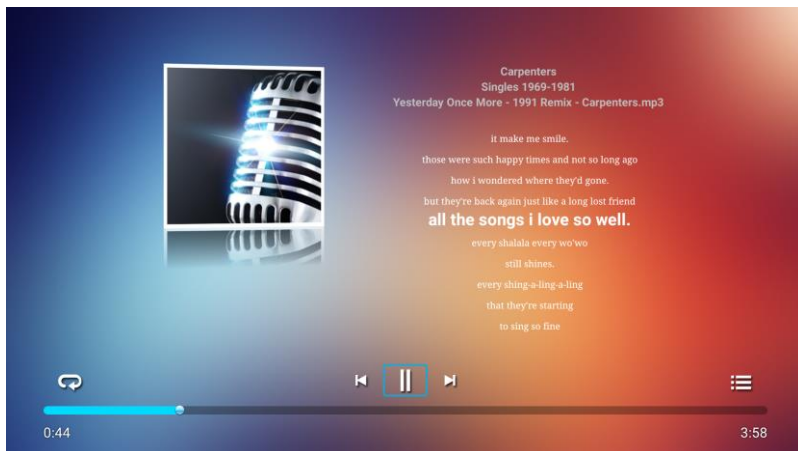
5. MPEG noise reduction: Through internal DSP to process the background noise of the picture, reduce the noise and enhance the image quality.

6. Motion compensation: Through the special mode of transportation, enhance the smoothness of picture and reduce the block.

7. HDR saturation: Expand the dark and light of the movie and make the picture show a wider color gamut and contrast.

In "Display Mode", you can adjust the effect by dividing the picture into two parts to compare with each other, or show the effect of a full screen directly after the adjustment.

VII, Music file play



Audio file play support to play a variety of formats audio files, when playing, you can press the left or right keys of the remote control to select the different control button on the control bar, the function of each button is as follows.

1. Prev: Play the previous song or the file of the previous song
2. Play / Pause: Pause or resume the play status
3. Next song: Play the next song or the file of the next song
4. Repeat play: Set the repeat mode, you can select from the four ways of single repeat, all repeat, random play, sequential play.
5. Playlist: From which you can select the music files in the current folder to play.

Note

- This machine can support LRC format lyrics file, please keep the lyrics file name as the same as the music file name and put together.
- When the MP3 file contains the album cover, it will show the album cover on the music playing interface.

VIII, Photo file play

Enter the "Photo" option from the "Home page" interface, select the storage device need to browse, up and down moving the operation focus to a photo file, press the OK key to start the picture player of the machine.

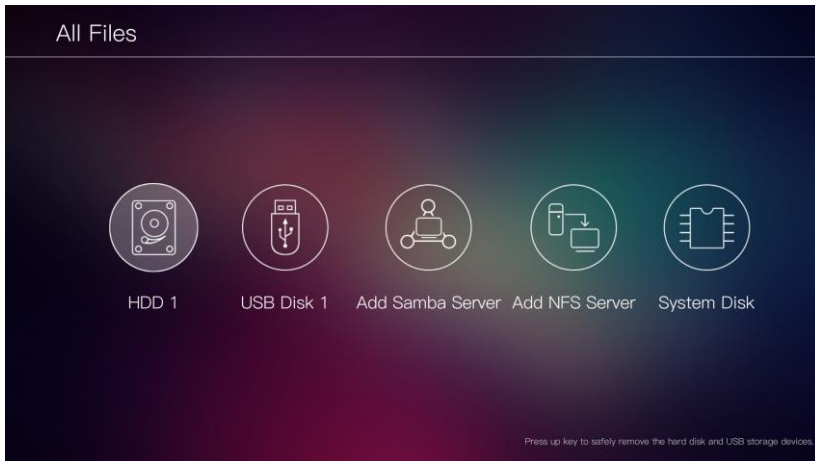


Egreat 4K Blu-ray Media Player

In the photo play interface, press the left or right key, you can move forward or back to switch and show the next photo. Press OK key, you can enter the photo slide play mode, the picture will automatically repeat playing one by one.

IX, File browsing

Enter the “All files” from the home page, select the storage device need to browse.

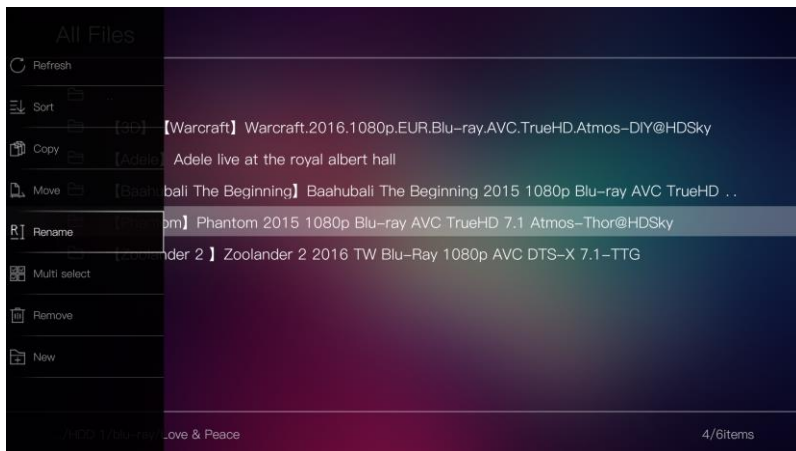


After entering the storage device, it will display all the files on the storage device.



At this point, you can press the “Up and down” key of the remote control to move the operation focus, press return key to return to the first level folder, press the “OK” key to enter a folder or open the selected file to play, etc.

In addition to the basic operation of selecting and playing, move the operation focus to a file, press “Menu” key to show function options, you can refresh, sort, copy, paste, move, rename, multi select, remove or create a new folder, and other operations.



Egreat 4K Blu-ray Media Player

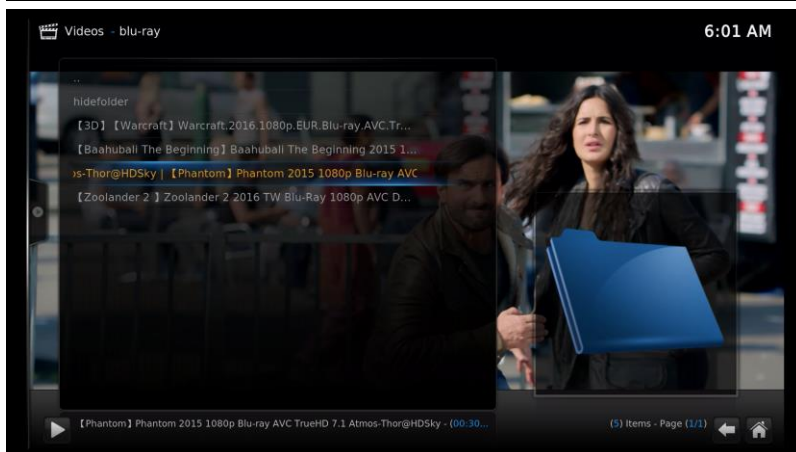
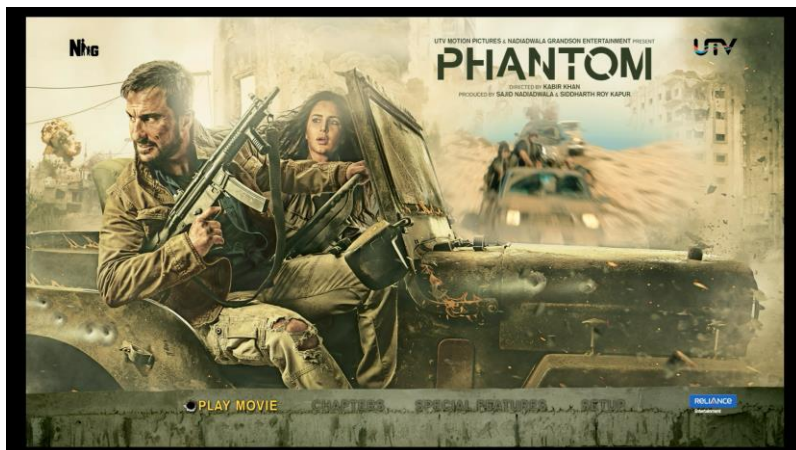
Note

- Here the local disk refers to the machine's built-in storage space, which will change the remaining space with the number of applications installed.
- USB refers to all storage devices connected via the USB interface.
- Network neighbor for access to the files of local area network shared by other devices.
- NFS is used to access the files shared by NAS and Linux devices, etc.
- Network neighbor and NFS need to connect the network cable or Wi-Fi before you can access it.
- As for the file encoding and format of video, audio and picture supported by this machine, please refer to the specification introduction in the last chapter of this user guide.

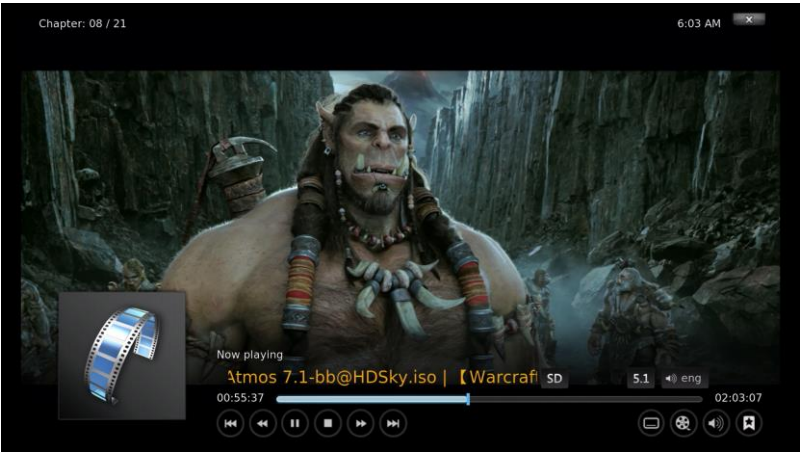
Chapter 7 XBMC introduction

XBMC (Also known as KODI) is a set of very popular audio and video play software in the world, we have achieved a lot of special features after the optimization adjustment and depth adaptation to the software. For example, the full function Blu-ray menu, H.265 4K hardware decoding, full format audio passthrough output and so on.

Following picture is the play screen shots of full function Blu-ray menu, for your reference only.



Egreat 4K Blu-ray Media Player

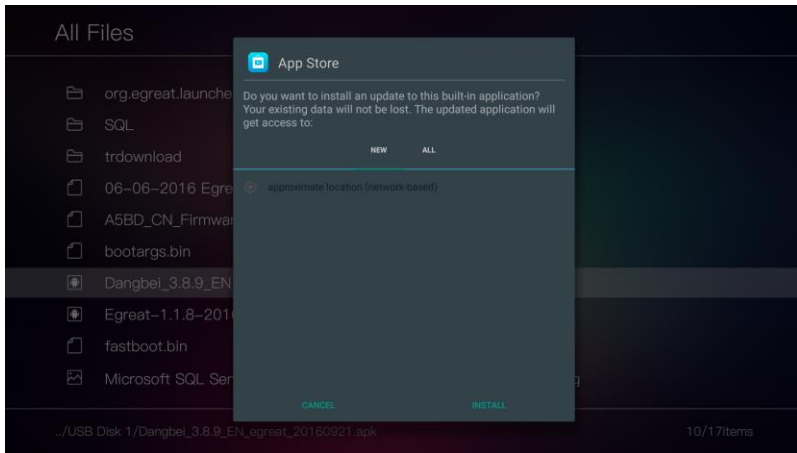


- Note
- Please refer to the corresponding information for the full use of XBMC.
 - The function of XBMC may be upgraded because of the version update, please take the actual function as the standard.

Chapter 8 Application installation

This machine is as an android intelligent product, which can be installed a variety of android applications by yourself.

Please select and enter the “All files” from the home page, then look for the applications that need to be installed (APK file), select and press the “OK” key, the system will prompt one by one until the application installation is completed.



Note

- Because the requirements of use environment of the application are not the same, not all android applications are able to run on this machine.
- Too many applications will take up much of the resource of this machine, and cause this machine with low running efficiency, please uninstall the applications from the machine for long term not used, and install again when needed.
- Part of the applications is not designed for the TV use, it may not be possible to operate the remote control in use, at this point, we advise the user also prepare the mouse and keyboard to control.
- In different system language environment, some applications may not be suitable for use in this environment, this machine will automatically hide these applications.

Egreat 4K Blu-ray Media Player

- When user install the applications from the third party, if you have any questions in use, please ask the team for the software, our company does not provide the technical support to the third party software.
- Some software may affect the normal operation of the system, please uninstall the software at this point, when serious, please reset this machine by using the forced recovery function.

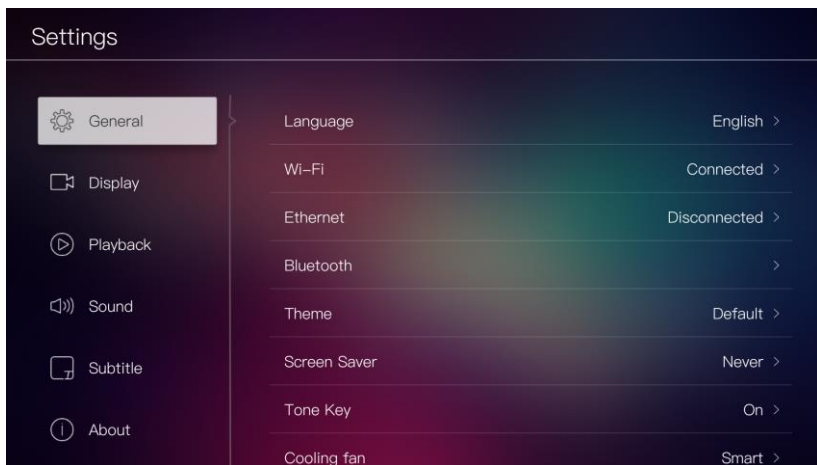
Chapter 9 Quick settings

In order to facilitate the user to operate the product, this machine is equipped with a set of quick settings function suitable for ordinary users and advanced settings function suitable for advanced users.

** Please refer to the "chapter 10 Advanced system settings" for the advanced system settings.*

You can quickly enter the quick settings function from the "Settings" option of the home page. Quick settings are divided into "General", "Display", "Sound", "About" four kinds of setting options.

I, General settings



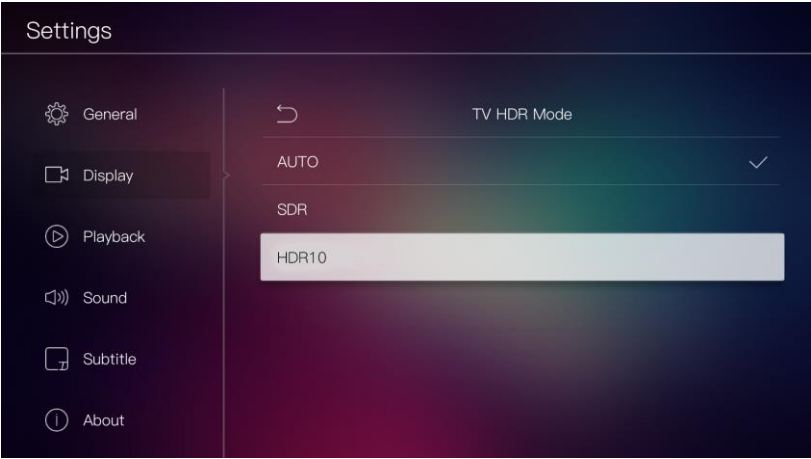
General settings, including "Language", "Wi-Fi", "Ethernet", "Bluetooth", "Theme", "Screen Saver", "Tone Key", "Blu-ray Region", "More settings" options, the functions are as follows.

1. Language: Set the system OSD language category.
2. Wi-Fi: Choose which wireless network hot spot you need to connect, enter the hot spot password and view the wireless network information, turn on and off the wireless network.

Egreat 4K Blu-ray Media Player

- 3. Ethernet: Turn on and off the wired network, turn on and off the DHCP function, manually set the IP address, subnet mask, gateway, etc., can also view the wired network information.
- 4. Bluetooth: Turn on and off the Bluetooth function, skip to the Bluetooth settings for the advanced settings.
- 5. Theme: Select the preset picture you like as a background of the operating page.
- 6. Screen saver: Select the delay time of the screen saver.
- 7. Tone key: Turn on and off the keypad tone.
- 8. Cooling Fan: Set the cooling fan to work under the Smart/User-define/Close mode.
- 9. Blu-ray Region: Select the corresponding approved play region of the Blu-ray movie.
- 10. More settings: Skip to the advanced system settings option for the advanced users.

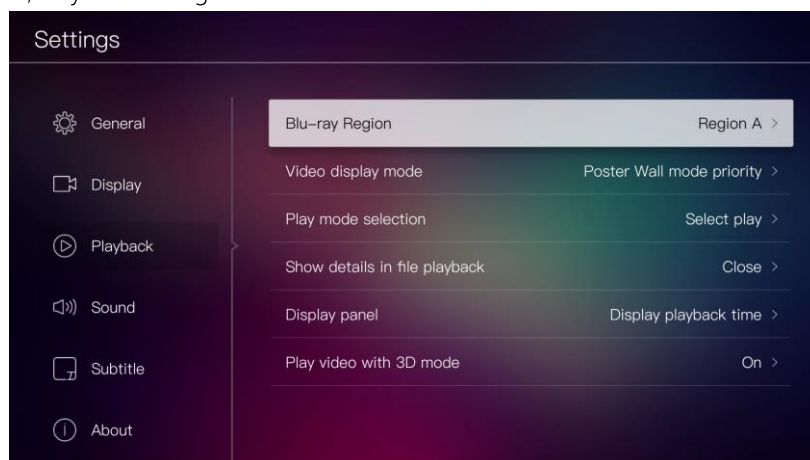
II, Display settings



Display settings, including "Resolution", "Scale", "Deep color", "HDR mode", "Adjust display frequency", "Play video with 3D mode" options, the functions are as follows.

1. Resolution: Set the screen resolution for the current display device.
2. Scale: After setting the resolution, if the picture display does not just fill the screen, you can adjust the picture scale here.
3. Deep color: The characteristic function of this machine, set the color space range of the output video and HDMI deep color mode.
4. HDR mode: Please select the image enhancement technology supported by the current display device.
5. Adjust display frequency: When this option turned on, it will automatically adjust the frequency of the video output and video encoding frame rate consistent when the movie being played, which can ensure to faithful restore the shooting site according to the movie encoding frame rate.
6. Play video with 3D mode: When this option turned on, if the machine is connected to a 3D TV, and playing the 3D video, it will automatically play the movie with 3D mode, no need for the user to switch the 3D play mode manually.

III, Playback setting



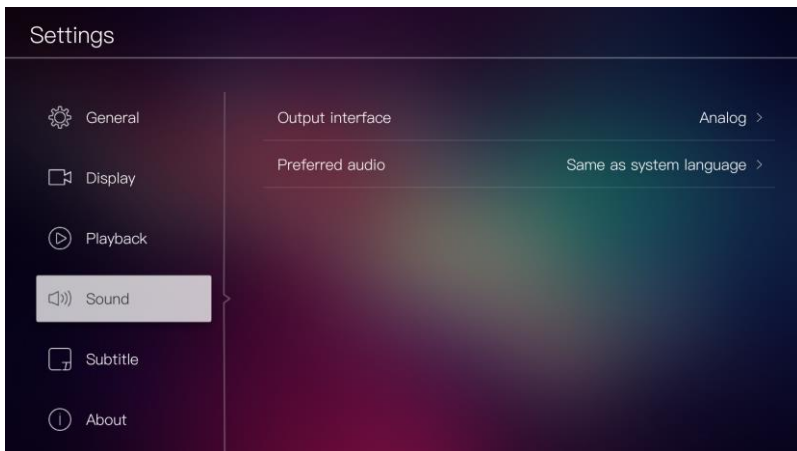
Playback settings include "Blu-ray Region", "Video display mode", "Play mode selection", "Show details in file playback", "Display panel", "Play video with 3D mode", the functions are as below:

1. Blu-ray Region: Select Blu-ray movie playback region

Egreat 4K Blu-ray Media Player

2. Video display mode: Video selection priority entrance into the wall poster or file list.
3. Play mode selection: Select the default play mode
4. Show details in the playback: Open or off showing poster details in file list mode
5. Display panel: Select front LED panel working status when play
6. Play video with 3D mode: When open this setting, if the connected TV is 3D and play the 3D video, the player will play the video in 3D mode directly, no need switch to 3D mode by hand.

IV, Sound settings



The sound settings including "Output interface", "Passthrough", "Preferred audio" options, the functions are as follows.

1. Output interface: Select the output mode of the audio signal, can select one of "HDMI", "S/PDIF" or "Analog" modes to transmit audio signals.

2. Passthrough: When selecting "HDMI" or "S/PDIF" as the output mode of the audio signal output in the last option, you can select here whether use the passthrough format of the audio signals to transmit:

- a) On: Use the RAW passthrough format to transmit audio signals. Corresponding to the users with audio power amplifier which support Dolby True-HD/Dolby Atmos and DTS-HD Master/DTS:X decoding function, can get

up to 7.1 channels or Dolby Atmos of the highest sound effect through the HDMI connecting to the audio power amplifier.

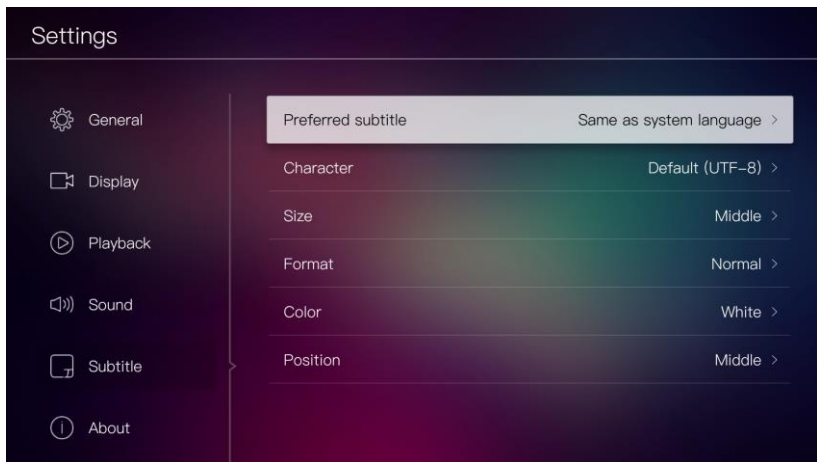
b) Off: Use the LPCM decoding format to transmit the audio signals. This audio transmission format does not have special requirements for the device, even a TV can also normally make a sound, can support Left and right two-channel stereo.

3. Preferred audio: The default audio language when select a movie for play. Normally, select "Same as system language", you can also set to "Original movie soundtrack" or a separate language according to your own preference.

Note

- The format of Dolby True-HD/Dolby Atmos and DTS-HD Master/DTS:X must be through HDMI interface to output, optical interface doesn't support.
- After selected the audio output mode that the device can't support, you may not be able to hear the sound or noise.
- 5.1 channel and 7.1 channel can be reflected only when the movie being played has the corresponding audio track.

V, Subtitle settings



Subtitle settings including "Preferred subtitle", "Character" options, the functions are as follows.

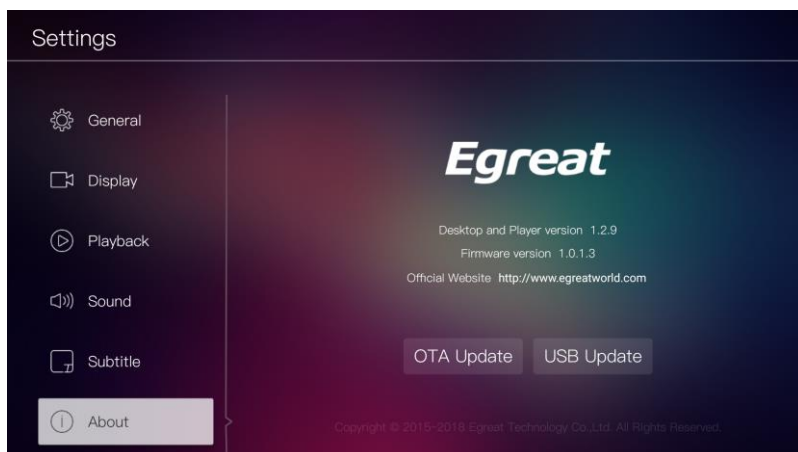
1. Preferred subtitle: The default subtitles when select a movie for play.

Egreat 4K Blu-ray Media Player

Normally, select "Same as system language", you can also set to a separate language according to your own preference

2. Character: Analyze and display the character encoding format used in subtitles when select a movie for play. Normally, select "universal (UTF-8)".

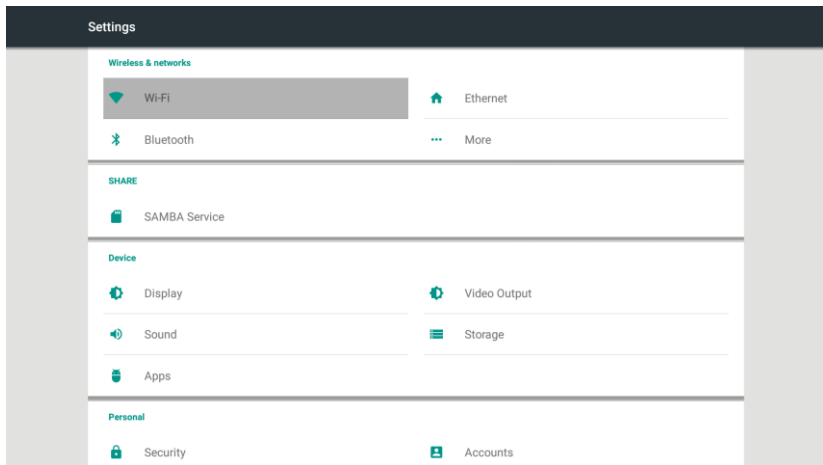
VI, About settings



About settings: Can view the model number of this machine, desktop and player version, firmware version, official website address and other information, select "OTA update" or "USB update" button, you can check and start the firmware upgrade.

Chapter 10 Advanced system settings

Select “More settings” to enter the system advanced settings from “Settings” and “general” of the home page, advanced settings are specially designed for advanced users, as for the users who are familiar with the player and android system, you can deeply set the details function of the player in the advanced settings.



Note

- The video resolution and audio output options may cause no picture display or no sound during the setting due to your display or audio device does not support, please ask our company customer service staff when users do not know how to set.
- Network connection may need to ask the network administrator to get the connection password or other information, please contact your network administrator.
- Some settings may not be applicable due to the changes of environment (such as the high display resolution or passthrough audio output mode) , please do not turn on this type of option if encountered such a situation.
- If an unexplained error occurred after setting, please select the option of

Egreat 4K Blu-ray Media Player

restoring the factory settings, reset this machine's settings.

- To restore the factory settings will empty all user installed applications and user data, please caution.

Chapter 11 Intelligent Home

Introduction

The "brain" of Control4 system is to control the host, they run control4 service and manage the whole project, control all equipment in residential or commercial automation system and all equipment setup.

People can control and manage the system by smart cellphone, table PC or PC directly.

Supported Control4 service

Egreat A5 already built service agreement with Control4, please kindly visit our official website and download C4 driver to implement Control4 intelligent home.

Supported RS-232 smart-control system

Egret A10 has RS232 female interface, only RS232 smart-control system firmware can implement this function. Egret A10 factory default standard firmware doesn't support this. Please visit official website and download the firmware and service.

Function operation

When the control host connect the player, then user can control and operate the player by C4 APP, smart cellphone, table PC and PC.

1. Simple operation
2. Set time to turn on/off the device automatically
3. Intelligent play/pause
4. One key audio/subtitle switch
5. Top menu/Pop menu

...

*For more operation, please refer to Chapter 6 Local Play

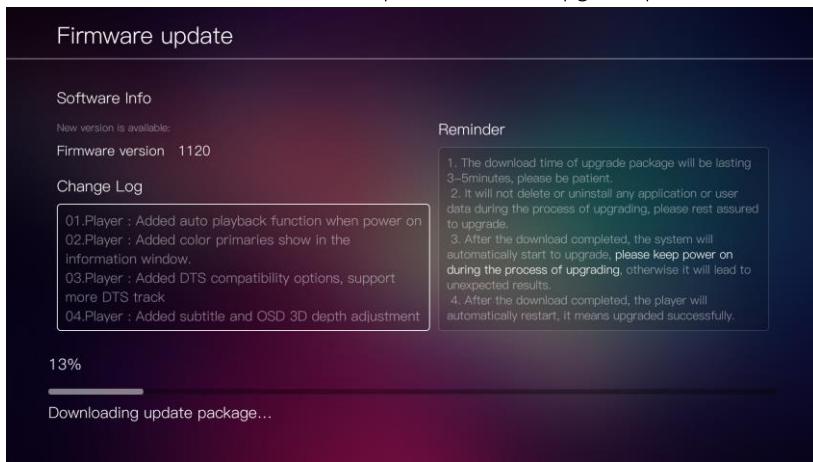
Chapter 12 Firmware update

Our company will not regularly develop and upgrade the firmware for the new functions of this machine and improve the original software. Therefore, it is necessary to upgrade the firmware of this machine.

There are three ways of firmware upgrade for this machine, the descriptions are as follows.

OTA Update

When our company are releasing new firmware, will deploy the new firmware in the upgrade server, after the user turn on and connect the machine to the internet, will receive an upgrade prompt of new version firmware, click to confirm the upgrade, system will automatically download the update firmware from the internet and complete the entire upgrade process.



If you missed the upgrade prompt, you can enter the “Settings” on the home page interface and enter the “About”, select “OTA Update” option, the system will also be networked and check, and complete the firmware download and upgrade.

The TV screen will appear green android small robot animation icon during the process of upgrading, please be patient.

After the OTA Update is completed, this machine will automatically

restart, after restart, the player can be normally put into use.

USB Update

When the user is unable to use the OTA Update, you can download the update firmware from our company's official website (www.egreatworld.com) or from the other download address, its file name is xxxx.zip (XXXX for any character).

After got the file, please save it in the U-disk or mobile hard disk, and insert into any USB interface of this machine.

Then enter the "Settings" from the home page interface and enter "About", select "USB update" option, select the letter of current drive (usually D) for U-disk or mobile hard disk in the drop-down option, after press the OK key to confirm, the system will automatically find the update firmware xxxx.zip from the U-disk, and verify the integrity of the update firmware, after completed the detection, the system will automatically complete the upgrade process.



The TV screen will appear green android small robot animation icon during the process of upgrading, please be patient.

After the USB Update is completed, this machine will automatically restart, after restart, the player can be normally put into use.

Forced refresh / recovery system

If this machine is unable to enter the normal operation interface or serious error due to some reasons, please use the system forced refresh or recovery system function.

The steps for system forced refresh / recovery system are as follows.

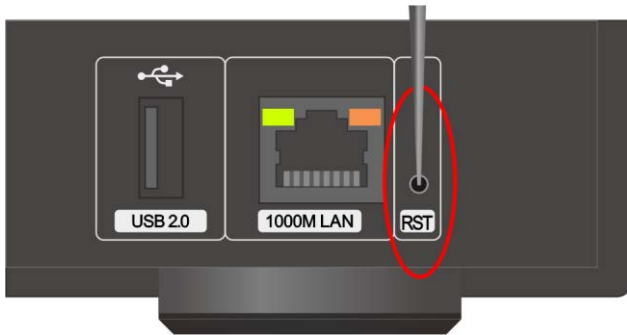
1. Please download the forced recovery firmware from the company's official website(www.egreatworld.com), the forced recovery firmware contains the following 4 files:

Egreat 4K Blu-ray Media Player

update.zip, fastboot.bin, recovery.img, bootargs.bin

Please do not modify the file name, and copy these four files to the root directory of the U-disk of FAT32 disk format.

2. Cut off the power supply of this machine, inset the U-disk into the USB2.0 interface of this machine's back (close to the LAN), with a slender hard object (something like the clip after expansion) to insert into the RST small round hole, keep holding down the RST key in RST round hole not loosened, plug in the AC power cable, turn on the power switch and press the power key of the remote control to turn on the machine power after holding down the RST button.



3. Keep the posture, release the RST button until the TV screen appears the prompt (the green android small robot animation icon) of being forced refresh / recovery system, the system will automatically complete the forced refresh / recovery system process.

4. Please be patient, after the forced refresh / recovery system is completed, this machine will automatically restart, after restart, the player can be normally put into use.

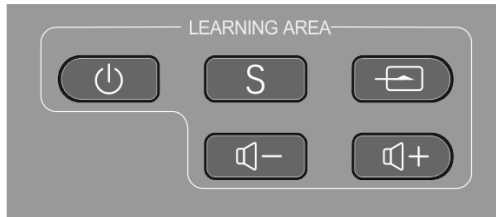
Note

- Please do not turn off or cut off the power of this machine during the progress of upgrading, otherwise it may cause this machine can't boot.
- It may interrupt the download process due to the reason of the internet when upgrade through OTA Update, at this point, please manually select the "OTA Update" to start the upgrade process.

- The file name of the forced recovery system is very important, do not modify the file name (including capital and lower-case).
- If you failed in a check, it is likely that the file has not been downloaded successfully or the file has been corrupted, please download again.

Chapter 13 Remote control learning key

This machine is equipped with a remote control with learning function, which can copy some of the button functions of other remote control to this remote control, and can complete the control of two devices with this remote control, normally, we copy the TV remote control button functions.



Following are the descriptions of how to use the learning button. Take learning the "Power key" as an example as below.

The first step, put the head of this remote control and the one need to be learned together, infrared transmitting tube are aligned with each other.

The second step, hold down the "S" button on the learning area of this machine's remote control, until the white backlight lighten.

The third step, press down the "Power" button on the learning button area of this machine's remote control(can also be other buttons), the white backlight will flash quickly once.

The fourth step, press down the "Power" button of the remote control need to be learned (corresponding to the other buttons need to be learned), the white backlight light flashes quickly two times after this machine's remote control received signal.

The fifth step, if there are more buttons need to be learned, please repeat the third and fourth steps.

The sixth step, after all keys learning are completed, press down any other button outside learning area of this machine's remote control, the white backlight light of this machine's remote control will be off, learning completed.

Chapter 14 Specification parameter

I, Hardware

CPU	Quad core ARM Cortex-A53 up to 2.0GHz
GPU	ARM Mali-720 3D GPU
Memory	2GB 1866MHz DDR3
Flash	16GB eMMC
Storage	USB2.0x1 + USB3.0x1 + External SATAx1 + SATAx1
Video output	HDMI 2.0a
Audio output	HDMI 2.0a Optical Coaxial Stereo
Network	IEEE 802.11b/g/n/ac 2.4g/5g Bluetooth 4.0 10/100/1000M Ethernet
Front panel	LED display panel + Standby indicator + IR Receiver
Power adaptor	110~220V 50/60Hz AC

II, Format

UI	EGUI 2.0
OSD	English, Simplified Chinese, traditional Chinese
File system	EXT3, EXT4, FAT, NTFS, GPT
Resolution	PAL,NTSC,720P@50/60Hz,1080P@50/60Hz,2160P@24/25/30/50/60Hz
Video decoder	H.265/HEVC Main/Main10 profile@Level5.1 High-tier, up to 4Kx2K@60fps H.264/AVC BP/MP/HP@ level 5.1; H264/AVC MVC, up to 4Kx2K@30fps VP9 up to 4Kx2K@60fps VP6/8 up to 1080p@60fps MPEG1 up to1080p@60fps MPEG2 SP@ML, MP@HL, up to 1080p@60fps MPEG4 SP@L0-3, ASP@L0-5, support GMC, up to 1080p@60fps AVS JiZhun Profile@6.0, AVS-P16(AVS+), up to 1080p@60fps VC-1 SP@ML, MP@HL, AP@L0-3, up to 1080p@60fps File format: TS, ASF, WMV, MKV, RMP4, AVI, M2TS, ISO, BDMV... (up to 2160P@60fps)
Audio decoder	MPEG L1/L2 Dolby Digital/Dolby Digital Plus Decoder-Converter Dolby True HD/Dolby Atmos decode/passthrough

	<p>DTS-HD Master/DTS:X decode / passthrough</p> <p>Dolby Digital/ DTS decode / passthrough</p> <p>AAC-LC, HE AAC V1/V2 decode</p> <p>APE/FLAC/OGG/AMR-NB/WB decode</p> <p>G.711(u/a) audio decode</p> <p>Dolby MS12 decode and sound effect</p> <p>G.711(u/a) /AMR-NB/AMR-WB /AAC-LC audio codec</p> <p>Support HE-AAC transcoding DD(AC3)</p> <p>File format: MPEG1/2, LPCM, PCM, FLAC, AAC, OGG, APE, MP3</p>
Video enhancement	<p>Imprex2.0 image enhancement engine</p> <p>Support HDR</p> <p>Support HDR 10</p>
Picture decoder	<p>Full HD JPEG hardware decoding up to 64 million pixels</p> <p>PNG hardware decoding up to 64 million pixels</p>
Subtitle	<p>SRT, ASS, SSA, PGS (Embedded) , SMI</p>
Intelligent home	<p>Supported RS-232 smart-control system</p> <p>Supported Control 4 smart-control protocol</p>

Shenzhen Egreat Technology Co.,Ltd

WEB : <http://www.egreatworld.com>

BBS : <http://bbs.egreatworld.com>